



SPARE PARTS LISTING SHEET FOR

# 400mm 2200W 230V Two Wheel Bandsaw

## Part A

Stock No.13766

Part No.BS400P

| KEY No. | PART No.   | STOCK No. | DESCRIPTION              |
|---------|------------|-----------|--------------------------|
| 1       | YBS400P-01 | 19267     | Hex bolt M6x20           |
| 2       | YBS400P-02 | 19268     | Cam shaft                |
| 3       | YBS400P-03 | 19269     | Cam base                 |
| 4       | YBS400P-04 | 19270     | Tyre                     |
| 5       | YBS400P-05 | 19275     | Ring circle 20mm         |
| 6       | YBS400P-06 | 19276     | Bearing 80104            |
| 7       | YBS400P-07 | 19277     | Ring circle 42mm         |
| 8       | YBS400P-08 | 19278     | Upper wheel              |
| 9       | YBS400P-09 | 19279     | Shaft, upper wheel       |
| 10      | YBS400P-10 | 19280     | Screw set M6x10          |
| 11      | YBS400P-11 | 19283     | Mount, upper wheel       |
| 12      | YBS400P-12 | 19286     | Indicator base           |
| 13      | YBS400P-13 | 19294     | Pin roll 3x10            |
| 14      | YBS400P-14 | 19296     | Spring                   |
| 15      | YBS400P-15 | 19298     | Spring seat              |
| 16      | YBS400P-16 | 19302     | Bearing trust 8201       |
| 17      | YBS400P-17 | 19306     | Hex screw M6x30          |
| 18      | YBS400P-18 | 19307     | Bracket, upper wheel     |
| 19      | YBS400P-19 | 19308     | Hex nut M6               |
| 20      | YBS400P-20 | 19315     | Thread, upper wheel      |
| 21      | YBS400P-21 | 19318     | Hand wheel               |
| 22      | YBS400P-22 | 19324     | Flat washer 6mm          |
| 23      | YBS400P-23 | 19326     | Hex bolt M6x16           |
| 24      | YBS400P-24 | 19327     | Lever                    |
| 25      | YBS400P-25 | 19351     | Screw set M6x12          |
| 26      | YBS400P-26 | 19352     | Mount, upper guide       |
| 27      | YBS400P-27 | 19353     | Thread tube              |
| 28      | YBS400P-28 | 19357     | Screw set M4x5           |
| 29      | YBS400P-29 | 19358     | Worm ring                |
| 30      | YBS400P-30 | 19360     | Worm                     |
| 31      | YBS400P-31 | 19369     | Insert upper guide       |
| 32      | YBS400P-32 | 19372     | Gear, upper guide        |
| 33      | YBS400P-33 | 19389     | Thread, gear             |
| 34      | YBS400P-34 | 19391     | Hex bolt M5x10           |
| 35      | YBS400P-35 | 19394     | Square tube, upper guide |

| KEY No. | PART No.   | STOCK No. | DESCRIPTION                |
|---------|------------|-----------|----------------------------|
| 36      | YBS400P-36 | 19405     | Rack                       |
| 37      | YBS400P-37 | 19408     | Sunk head screw M5x10      |
| 38      | YBS400P-38 | 19414     | Cover plate, upper guide   |
| 39      | YBS400P-39 | 19415     | Hex screw M8x16            |
| 40      | YBS400P-40 | 19416     | Mount, upper guide         |
| 41      | YBS400P-41 | 19417     | Shaft bearing, upper wheel |
| 42      | YBS400P-42 | 19418     | Flat washer 6mm            |
| 43      | YBS400P-43 | 19419     | Hex screw M6x30            |
| 44      | YBS400P-44 | 19420     | Brush                      |
| 45      | YBS400P-45 | 19421     | Hex bolt M5x10             |
| 46      | YBS400P-46 | 19422     | Washer 5mm                 |
| 47      | YBS400P-47 | 19423     | Sliding guard              |
| 48      | YBS400P-48 | 19427     | Safe guard, upper guide    |
| 49      | YBS400P-49 | 19432     | Bracket                    |
| 50      | YBS400P-50 | 19433     | Hex bolt M8x30             |
| 51      | YBS400P-51 | 19436     | Washer 8mm                 |
| 52      | YBS400P-52 | 19457     | Bearing 80201              |
| 53      | YBS400P-53 | 19554     | Bush, bearing              |
| 54      | YBS400P-54 | 19555     | Nut, bearing               |
| 55      | YBS400P-55 | 19556     | Hex bolt M6x16             |
| 56      | YBS400P-56 | 19557     | Guide base, upper guide    |
| 57      | See manual |           | Saw blade                  |
| 58      | YBS400P-58 | 19558     | Lower wheel                |
| 59      | YBS400P-59 | 19559     | Pulley drive               |
| 60      | YBS400P-60 | 19560     | Belt "A"                   |
| 61      | YBS400P-61 | 19561     | Dual thread screw          |
| 62      | YBS400P-62 | 19565     | Shaft, lower wheel         |
| 63      | YBS400P-63 | 19567     | Bracket, lower wheel       |
| 64      | YBS400P-64 | 19568     | Ring circle 28mm           |
| 65      | YBS400P-65 | 19570     | Washer 12mm                |
| 66      | YBS400P-66 | 19573     | Bearing 80101              |
| 67      | YBS400P-67 | 19586     | Ring circle 28mm           |
| 68      | YBS400P-68 | 19591     | Tension pully              |
| 69      | YBS400P-69 | 19592     | Shaft, tension pully       |
| 70      | YBS400P-70 | 19593     | Collar, tension pully      |

**Helpline: (023) 8049 4344. Sales Desk: (023) 8049 4333. General Enquiries: (023) 8026 6355.**

DRAPER TOOLS LTD, HURSLEY ROAD, CHANDLER'S FORD, EASTLEIGH, HANTS. SO53 1YF. U.K. internet: www.draper.co.uk e-mail: sales@drapertools.com



SPARE PARTS LISTING SHEET FOR

# 400mm 2200W 230V Two Wheel Bandsaw

## Part A

Stock No.13766

Part No.BS400P

| KEY No. | PART No.   | STOCK No. | DESCRIPTION             |
|---------|------------|-----------|-------------------------|
| 71      | YBS400P-71 | 19594     | Screw set M5x30         |
| 72      | YBS400P-72 | 19595     | Thread, tension rod     |
| 73      | YBS400P-73 | 19600     | Hex bolt M5x30          |
| 74      | YBS400P-74 | 19601     | Handwheel, tension      |
| 75      | YBS400P-75 | 19602     | Spacer                  |
| 76      | YBS400P-76 | 19607     | Motor pulley            |
| 77      | YBS400P-77 | 19608     | Screw set M5x10         |
| 78      | YBS400P-78 | 19610     | Key flat                |
| 79      | YBS400P-79 | 19615     | Motor                   |
| 80      | YBS400P-80 | 19624     | Saw frame               |
| 81      | YBS400P-81 | 19626     | Spring washer 12mm      |
| 82      | YBS400P-82 | 19630     | Cap nut                 |
| 83      | YBS400P-83 | 19634     | Bush, shaft lower wheel |
| 84      | YBS400P-84 | 19635     | Washer 16mm             |
| 85      | YBS400P-85 | 19636     | Hex nut M16             |
| 86      | YBS400P-86 | 19638     | Screw M5x16             |
| 87      | YBS400P-87 | 19642     | Pointer, mount          |
| 88      | YBS400P-88 | 19643     | Hex nut M5              |
| 89      | YBS400P-89 | 19644     | Hand wheel              |
| 90      | YBS400P-90 | 19648     | Screw M6x10             |
| 91      | YBS400P-91 | 19649     | Spring washer           |
| 92      | YBS400P-92 | 19660     | Lock lever, wheel tilt  |
| 93      | YBS400P-93 | 19665     | Lock flower screw       |
| 94      | YBS400P-94 | 19667     | Parallel pin            |
| 95      | YBS400P-95 | 19668     | Flat washer 8mm         |
| 96      | YBS400P-96 | 19671     | Hex bolt M8x12          |

| KEY No. | PART No.    | STOCK No. | DESCRIPTION                      |
|---------|-------------|-----------|----------------------------------|
| 97      | YBS400P-97  | 19673     | Screw, indicator                 |
| 98      | YBS400P-98  | 19681     | Indicator                        |
| 99      | YBS400P-99  | 19682     | Lock cam                         |
| 100     | YBS400P-100 | 19690     | Lever, lock cam                  |
| 101     | YBS400P-101 | 19700     | Insert cut                       |
| 102     | YBS400P-102 | 19701     | Table                            |
| 103     | YBS400P-103 | 19703     | Hex nut M8                       |
| 104     | YBS400P-104 | 19705     | Hex screw M8x70                  |
| 105     | YBS400P-105 | 19706     | Tilt rack                        |
| 106     | YBS400P-106 | 19711     | Screw M5x6                       |
| 107     | YBS400P-107 | 19715     | Carriage bolt M8x80              |
| 108     | YBS400P-108 | 19716     | Rack, table trunnion             |
| 109     | YBS400P-109 | 19718     | Table trunnion, upper            |
| 110     | YBS400P-110 | 19720     | Hex bolt M10x30                  |
| 111     | YBS400P-111 | 19723     | Table trunnion, lower            |
| 112     | YBS400P-112 | 19725     | Flower screw & lower guide       |
| 113     | YBS400P-113 | 19726     | Flower screw & shaft lower guide |
| 114     | YBS400P-114 | 19731     | Lock lever, table tilt           |
| 115     | YBS400P-115 | 19732     | Guide base, lower guide          |
| 116     | YBS400P-116 | 19740     | Pointer, table tilt              |
| 117     | YBS400P-117 | 19741     | Guide rod, bearing               |
| 118     | YBS400P-118 | 19742     | Guard left, lower guide          |
| 119     | YBS400P-119 | 19743     | Guard right, lower guide         |
| 120     | YBS400P-120 | 19745     | Lock nut M8                      |
| 121     | YBS400P-121 | 19747     | Flower screw M8x50               |

**Helpline: (023) 8049 4344. Sales Desk: (023) 8049 4333. General Enquiries: (023) 8026 6355.**

DRAPER TOOLS LTD, HURSLEY ROAD, CHANDLER'S FORD, EASTLEIGH, HANTS. SO53 1YF. U.K. internet: www.draper.co.uk e-mail: sales@drapertools.com



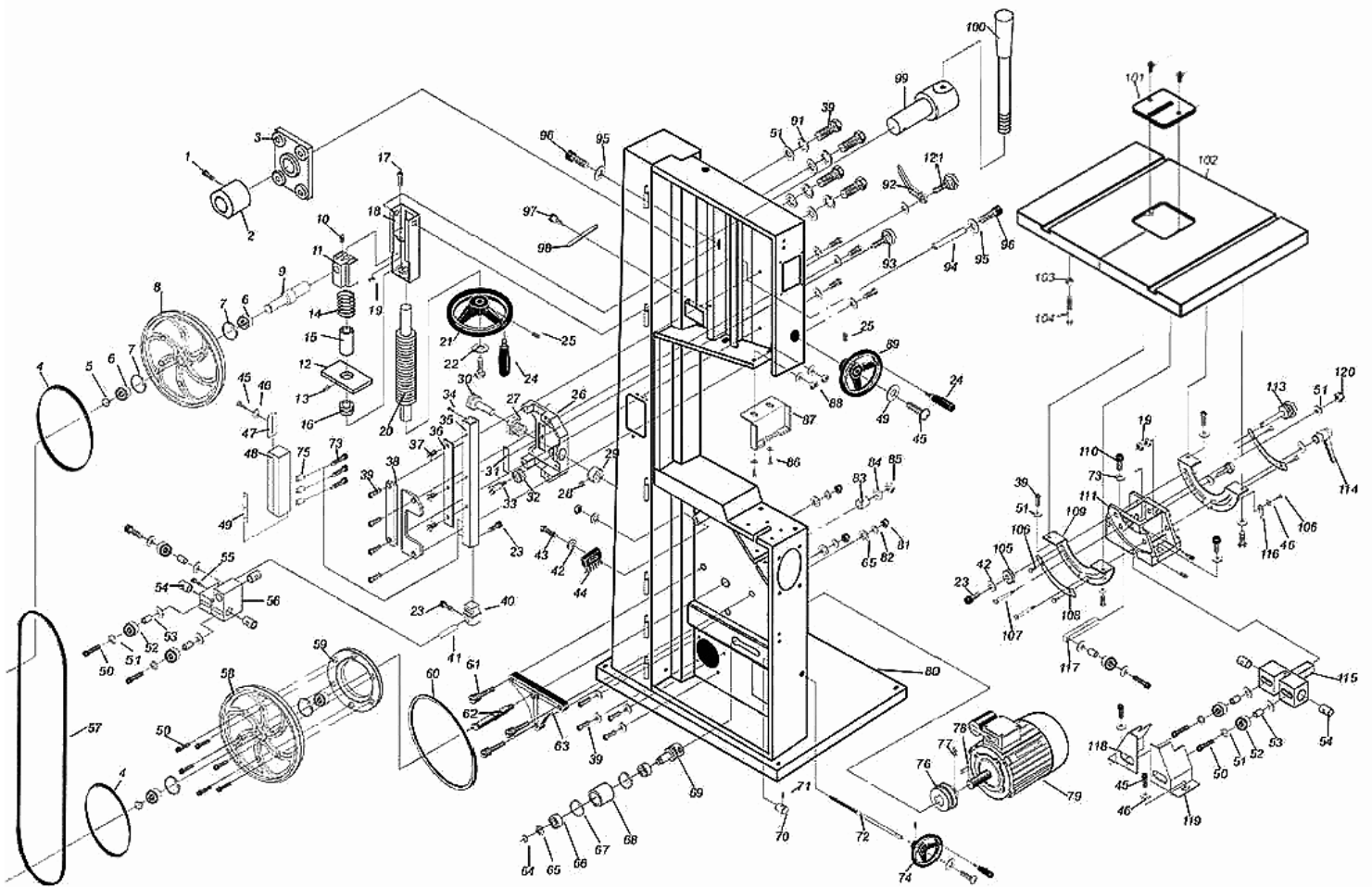
SPARE PARTS DRAWING SHEET FOR

# 400mm 2200W 230V Two Wheel Bandsaw

## Part A

Stock No.13766

Part No.BS400P



**Helpline:** (023) 8049 4344. **Sales Desk:** (023) 8049 4333. **General Enquiries:** (023) 8026 6355.

DRAPER TOOLS LTD, HURSLEY ROAD, CHANDLER'S FORD, EASTLEIGH, HANTS. SO53 1YF. U.K. internet: [www.draper.co.uk](http://www.draper.co.uk) e-mail: [sales@drapertools.com](mailto:sales@drapertools.com)



SPARE PARTS LISTING SHEET FOR

# 400mm 2200W 230V Two Wheel Bandsaw

## Part B

Stock No.13766

Part No.BS400P

| KEY No. | PART No.    | STOCK No. | DESCRIPTION      |
|---------|-------------|-----------|------------------|
| 201     | YBS400P-201 | 19757     | Rivet            |
| 202     | YBS400P-202 | 19758     | Screw M4x10      |
| 203     | YBS400P-203 | 19759     | Washer 4mm       |
| 204     | YBS400P-204 | 19761     | Key, microswitch |
| 205     | YBS400P-205 | 19763     | Hex nut m6       |
| 206     | YBS400P-206 | 19764     | Washer 6mm       |
| 207     | YBS400P-207 | 19768     | Hex bolt M6x20   |
| 208     | YBS400P-208 | 19781     | Door upper       |
| 209     | YBS400P-209 | 19784     | Hex nut M4       |
| 210     | YBS400P-210 | 19786     | Copper ring      |
| 211     | YBS400P-211 | 19790     | View window      |
| 212     | YBS400P-212 | 19791     | Door middle      |
| 213     | YBS400P-213 | 19792     | Screw M5x12      |
| 214     | YBS400P-214 | 19793     | Washer 5mm       |
| 215     | YBS400P-215 | 19797     | Hex nut M5       |
| 216     | YBS400P-216 | 19808     | Door lower       |
| 217     | YBS400P-217 | 19809     | Lock nut M6      |
| 218     | YBS400P-218 | 19810     | Screw M5x10      |

| KEY No. | PART No.    | STOCK No. | DESCRIPTION        |
|---------|-------------|-----------|--------------------|
| 219     | YBS400P-219 | 19811     | Clamp ,cord        |
| 220     | YBS400P-220 | 19812     | Bush, cord         |
| 221     | YBS400P-221 | 19813     | Flat brush         |
| 222     | YBS400P-222 | 19814     | Screw M5x10        |
| 223     | YBS400P-223 | 19831     | Rivet 2x5          |
| 224     | YBS400P-224 | 19835     | Screw M4x6         |
| 225     | YBS400P-225 | 19836     | Grounding terminal |
| 226     | YBS400P-226 | 19842     | Power switch       |
| 227     | YBS400P-227 | 19844     | Screw M4x12        |
| 228     | YBS400P-228 | 19853     | Hex nut M10        |
| 229     | YBS400P-229 | 19855     | Washer 10mm        |
| 230     | YBS400P-230 | 19858     | Ring, lift up      |
| 231     | YBS400P-231 | 19861     | Screw M4x4         |
| 232     | YBS400P-232 | 19864     | Strain relief      |
| 233     | YBS400P-233 | 19867     | Door lock          |
| 234     | YBS400P-234 | 19868     | Hex bolt M6x22     |
| 235     | YBS400P-235 | 19869     | Microswitch        |
| 236     | YBS400P-236 | 19870     | Suction connection |

**Helpline: (023) 8049 4344. Sales Desk: (023) 8049 4333. General Enquiries: (023) 8026 6355.**

DRAPER TOOLS LTD, HURSLEY ROAD, CHANDLER'S FORD, EASTLEIGH, HANTS. SO53 1YF. U.K. internet: [www.drapertools.co.uk](http://www.drapertools.co.uk) e-mail: [sales@drapertools.com](mailto:sales@drapertools.com)





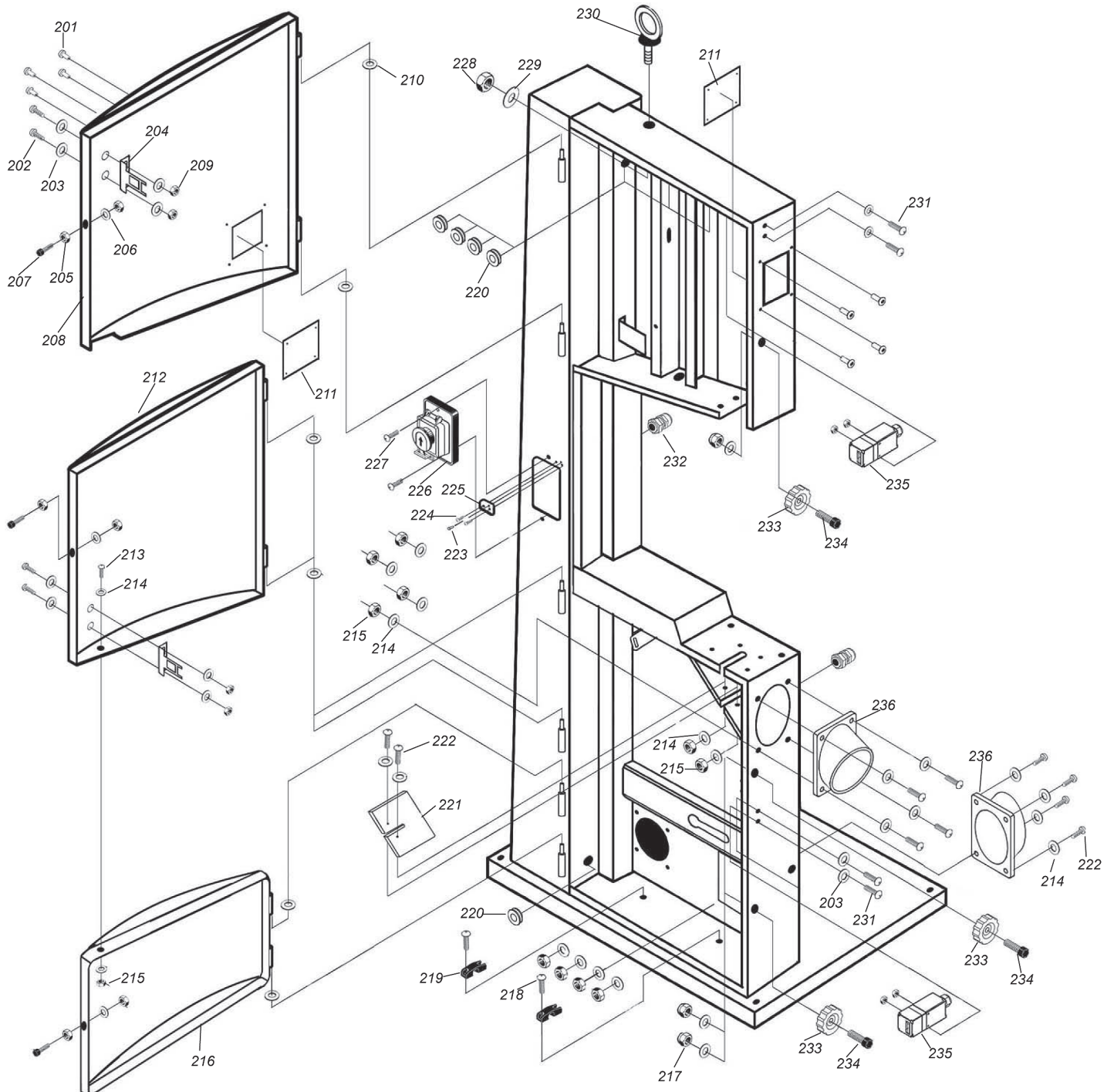
SPARE PARTS DRAWING SHEET FOR

# 400mm 2200W 230V Two Wheel Bandsaw

## Part B

Stock No.13766

Part No.BS400P



**Helpline: (023) 8049 4344. Sales Desk: (023) 8049 4333. General Enquiries: (023) 8026 6355.**

DRAPER TOOLS LTD, HURSLEY ROAD, CHANDLER'S FORD, EASTLEIGH, HANTS. SO53 1YF. U.K. internet: [www.draper.co.uk](http://www.draper.co.uk) e-mail: [sales@drapertools.com](mailto:sales@drapertools.com)



SPARE PARTS LISTING SHEET FOR

# 400mm 2200W 230V Two Wheel Bandsaw

## Part C

Stock No.13766

Part No.BS400P

| KEY No. | PART No.    | STOCK No. | DESCRIPTION              |
|---------|-------------|-----------|--------------------------|
| 301     | YBS400P-301 | 19872     | Mitre gauge knob         |
| 302     | YBS400P-302 | 19873     | Washer 8mm               |
| 303     | YBS400P-303 | 19874     | Scale, gauge             |
| 304     | YBS400P-304 | 19876     | Fence, gauge             |
| 305     | YBS400P-305 | 19882     | Carriage bolt M6x40      |
| 306     | YBS400P-306 | 19887     | Screw M4x8               |
| 307     | YBS400P-307 | 19888     | Hex nut M4               |
| 308     | YBS400P-308 | 19889     | Mitre gauge rod          |
| 309     | YBS400P-309 | 19890     | Mitre gauge base         |
| 310     | YBS400P-310 | 19891     | Washer 6mm               |
| 311     | YBS400P-311 | 19892     | Thumb nut M6             |
| 312     | YBS400P-312 | 19893     | Screw M5x10              |
| 313     | YBS400P-313 | 19894     | Indicator, gauge         |
| 314     | YBS400P-314 | 19895     | Block, indicator         |
| 315     | YBS400P-315 | 19899     | Stop pin                 |
| 316     | YBS400P-316 | 19900     | Roller, gauge            |
| 317     | YBS400P-317 | 19912     | Rear rail, table         |
| 318     | YBS400P-318 | 19913     | Tapping screw ST4.0x12   |
| 319     | YBS400P-319 | 19914     | Left end cap, front rail |
| 320     | YBS400P-320 | 19915     | Front rail, table        |
| 321     | YBS400P-321 | 19921     | Wing screw               |

| KEY No. | PART No.    | STOCK No. | DESCRIPTION               |
|---------|-------------|-----------|---------------------------|
| 322     | YBS400P-322 | 19931     | Right end cap, front rail |
| 330     | YBS400P-330 | 19933     | Front plate, fence        |
| 331     | YBS400P-331 | 19934     | Insert, fence mount       |
| 332     | YBS400P-332 | 19937     | Fence                     |
| 333     | YBS400P-333 | 19939     | Rip fence head            |
| 334     | YBS400P-334 | 19949     | Plastic shoes             |
| 335     | YBS400P-335 | 19954     | Screw M4x10               |
| 336     | YBS400P-336 | 19966     | Hex screw M6x8            |
| 337     | YBS400P-337 | 19974     | View lens, rip fence      |
| 338     | YBS400P-338 | 20028     | Rear clamp                |
| 339     | YBS400P-339 | 20060     | Lock nut M6               |
| 340     | YBS400P-340 | 20061     | Spacer                    |
| 341     | YBS400P-341 | 20063     | Bearing 80016             |
| 342     | YBS400P-342 | 20064     | Hex screw M6x35           |
| 343     | YBS400P-343 | 20065     | Rear plate, rip fence     |
| 344     | YBS400P-344 | 20068     | Pin roll 5x16             |
| 345     | YBS400P-345 | 20069     | Rear block, rip fence     |
| 346     | YBS400P-346 | 20071     | Lock eccentric rod        |
| 347     | YBS400P-347 | 20072     | Lock eccentric            |
| 348     | YBS400P-348 | 20073     | Rip fence lock rod        |
| 349     | YBS400P-349 | 20074     | Rip fence handle          |

**Helpline:** (023) 8049 4344. **Sales Desk:** (023) 8049 4333. **General Enquiries:** (023) 8026 6355.

DRAPER TOOLS LTD, HURSLEY ROAD, CHANDLER'S FORD, EASTLEIGH, HANTS. SO53 1YF. U.K. internet: www.draper.co.uk e-mail: sales@drapertools.com



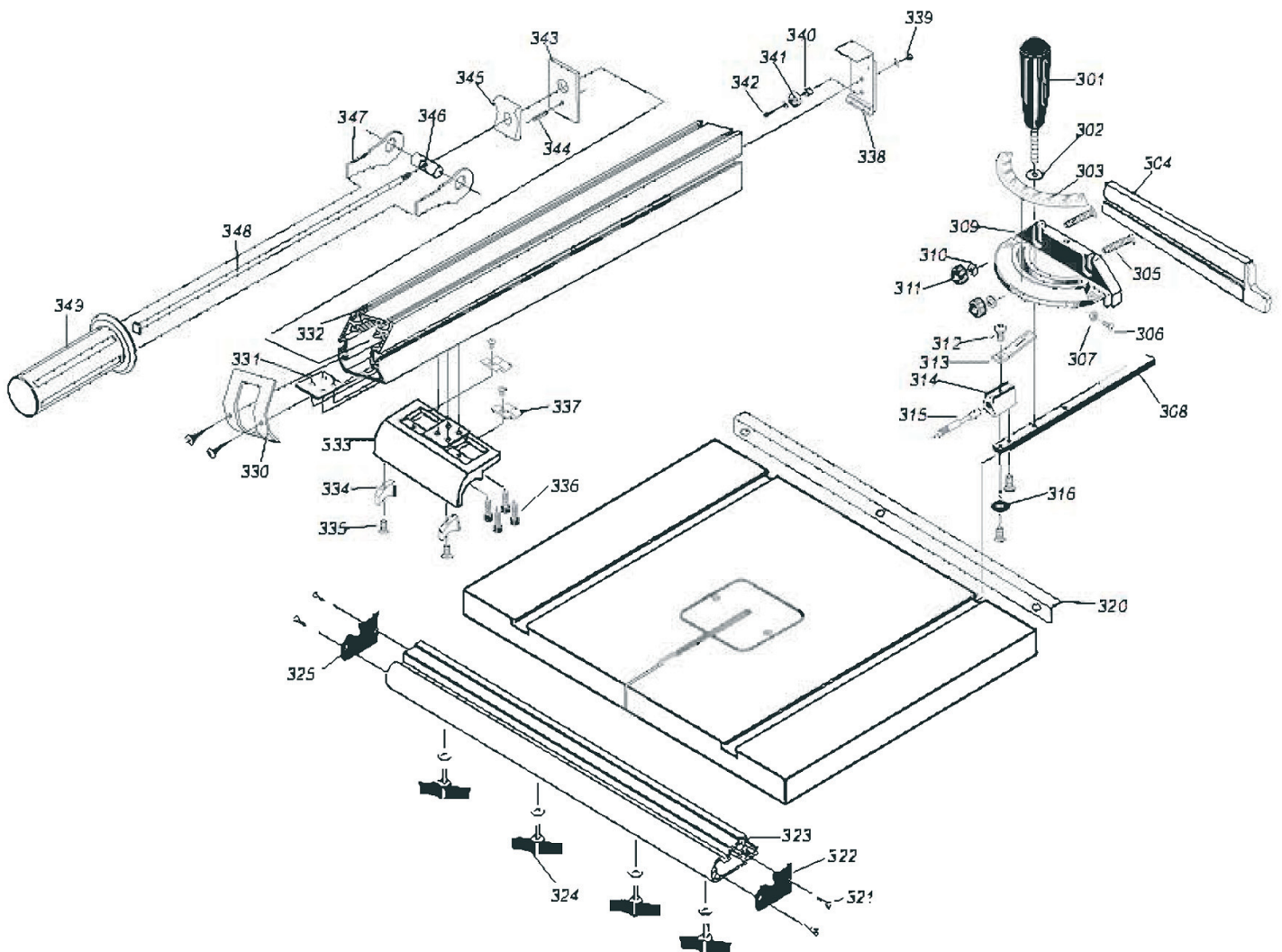
SPARE PARTS DRAWING SHEET FOR

# 400mm 2200W 230V Two Wheel Bandsaw

## Part C

Stock No.13766

Part No.BS400P



Helpline: (023) 8049 4344. Sales Desk: (023) 8049 4333. General Enquiries: (023) 8026 6355.

DRAPER TOOLS LTD, HURSLEY ROAD, CHANDLER'S FORD, EASTLEIGH, HANTS. SO53 1YF. U.K. internet: www.draper.co.uk e-mail: sales@drapertools.com

DKMC121011