



SPARE PARTS LISTING SHEET FOR

# 1600W 15kg Breaker

Stock No.17768

Part No.BR15A

KEY No.	PART No.	STOCK No.	DESCRIPTION
1	Y-BR15-01	83826	Screw M10x35-12.9
2	Y-BR15-02	83827	Spring Washer
3	Y-BR15-03	83828	Front Cover
4	Y-BR15-04	83829	Locking stick washer
5	Y-BR15-05	83830	Locking stick spring washer
6	Y-BR15-06	83831	Locking stick spring
7	Y-BR15-07	83832	Locking pin
8	Y-BR15-08	83833	Spring cover
9	Y-BR15-09	83834	Locking stick
10	Y-BR15-10	83835	Small anti vibration ring
11	Y-BR15-11	83837	Aluminium cover 'O' ring
12	Y-BR15-12	83838	Aluminium cover
13	Y-BR15-13	83839	Opening sleeve ring
14	Y-BR15-14	83840	Opening sleeve
15	Y-BR15-15	83841	Washer
16	Y-BR15-16	83843	Big anti vibration ring
18	Y-BR15-18	83844	M8x35-12.9
19	Y-BR15-19	83845	Spring washer
20	Y-BR15-20	83846	Flat washer
21	Y-BR15-21	83847	Front placket
22	Y-BR15A-22	17825	Impact hammer
23	Y-BR15-23	83849	Rotor
24	Y-BR15-24	83850	Bearing 6201-2RS
25	Y-BR15-25	83851	Fan cover
26	Y-BR15-26	83852	Screw 4.8x60
27	Y-BR15-27	83853	Stator
28	Y-BR15-28	83854	Screw M5x16
29	Y-BR15-29	83856	Spring washer
30	Y-BR15-30	83857	Bearing fixing plate
31	Y-BR15-31	83858	Bearing 6302-2RS
32	Y-BR15-32	83850	Bearing 6201-2RS
33	Y-BR15-33	83859	Small gear
34	Y-BR15-34	83850	Bearing 6001-2RS
35	Y-BR15-35	83874	Screw M6x45
36	Y-BR15-36	83875	Spring washer

KEY No.	PART No.	STOCK No.	DESCRIPTION
37	Y-BR15-37	83876	Flat washer
38	Y-BR15-38	83877	Up cover
39	Y-BR15-39	83878	Locating pin
40	Y-BR15-40	83879	Middle cover
41	Y-BR15-41	83880	Seal ring
42	Y-BR15-42	83858	Bearing 6302-2RS
43	Y-BR15-43	83881	Clip ring
44	Y-BR15-44	83882	Big gear
45	Y-BR15-45	83883	Distance ring
46	Y-BR15-46	83884	Bearing 6205-2RS
47	Y-BR15-47	83885	Big bearing cover
48	Y-BR15-48	83886	Semicircular key
49	Y-BR15-49	83889	Spindle
50	Y-BR15-50	83890	Front placket seal
51	Y-BR15-51	83891	Piston seal
52	Y-BR15A-52	17826	'O' - ring
53	Y-BR15-53	83893	Piston
54	Y-BR15-54	83894	Piston pin
55	Y-BR15-55	83895	Connecting rod
56	Y-BR15-56	83896	Needle bearing
57	Y-BR15-57	83897	Needle bearing cover
58	Y-BR15-58	83898	Screw M8x30
59	Y-BR15-59	83899	Housing
60	Y-BR15-60	83900	Carbon brush holder washer
61	Y-BR15-61	83901	Carbon brush holder
62	Y-BR15A-62	17827	Carbon brush
63	Y-BR15-63	83903	Carbon brush holder cover
64	Y-BR15-64	83904	Carbon brush holder protector
65	Y-BR15-65	83905	Carbon brush holder gland
66	Y-BR15-66	83906	Flat washer
67	Y-BR15-67	83907	Spring washer
68	Y-BR15-68	83908	Screw M4x12
69	Y-BR15-69	83909	Copper spring washer
70	Y-BR15-70	83910	Screw M5x10
71	Y-BR15-71	83912	Rear cover

**Helpline: (023) 8049 4344. Sales Desk: (023) 8049 4333. General Enquiries: (023) 8026 6355.**

DRAPER TOOLS LTD, HURSLEY ROAD, CHANDLER'S FORD, EASTLEIGH, HANTS. SO53 1YF. U.K website: www.drapertools.com e-mail: sales@drapertools.com



SPARE PARTS LISTING SHEET FOR

# 1600W 15kg Breaker

Stock No.17768

Part No.BR15A

KEY No.	PART No.	STOCK No.	DESCRIPTION
72	Y-BR15-72	83913	Flat washer
73	Y-BR15-73	83914	Screw M5x12
74	Y-BR15-74	83915	Grease core cover
75	Y-BR15-75	83916	Plastic grease core
76	Y-BR15-76	83917	Screw M4x16
77	Y-BR15-77	83918	Grease stick 8x45
78	Y-BR15-78	83919	Grease cover seal
79	Y-BR15-79	83920	Grease cover
80	Y-BR15-80	83921	Grease hole seal
81	Y-BR15-81	83922	Grease hole
82	Y-BR15-82	83923	Screw M6x30
83	Y-BR15-83	83924	Right handle
84	Y-BR15-84	83925	Capacitor 0.33UF
85	Y-BR15-85	83926	Off/on switch
86	Y-BR15-86	83927	Left handle
87	Y-BR15-87	83928	Screw ST4x16F
88	Y-BR15-88	83930	Cord clamp
89	Y-BR15-89	83931	Cord sheath

KEY No.	PART No.	STOCK No.	DESCRIPTION
90	Y-BR15-90	83932	Cord
91	Y-BR15-91	83933	Stator cover
92	Y-BR15-92	83934	Cable tube
101	Y-BR15-101	83935	Auxiliary handle screw cover
102	Y-BR15-102	83936	Auxiliary handle axis
103	Y-BR15-103	83938	Auxiliary handle cover
104	Y-BR15-104	83939	Auxiliary handle rubber cover
105	Y-BR15-105	83940	Auxiliary handle pin axis
106	Y-BR15-106	83943	Auxiliary handle clamp block
107	Y-BR15-107	83944	Auxiliary handle clamp
108	Y-BR15-108	83946	Auxiliary handle clamp
109	Y-BR15-109	83947	Nut M8
201	A-BR15-201	83948	BMC
202	A-BR15-202	83949	Spanner
203	A-BR15-203	83950	Point chisel
204	A-BR15-204	83951	Flat chisel
205	A-BR15-205	83952	Oil bottle

**Helpline: (023) 8049 4344. Sales Desk: (023) 8049 4333. General Enquiries: (023) 8026 6355.**

DRAPER TOOLS LTD, HURSLEY ROAD, CHANDLER'S FORD, EASTLEIGH, HANTS. SO53 1YF. U.K website: [www.drapertools.com](http://www.drapertools.com) e-mail: [sales@drapertools.com](mailto:sales@drapertools.com)

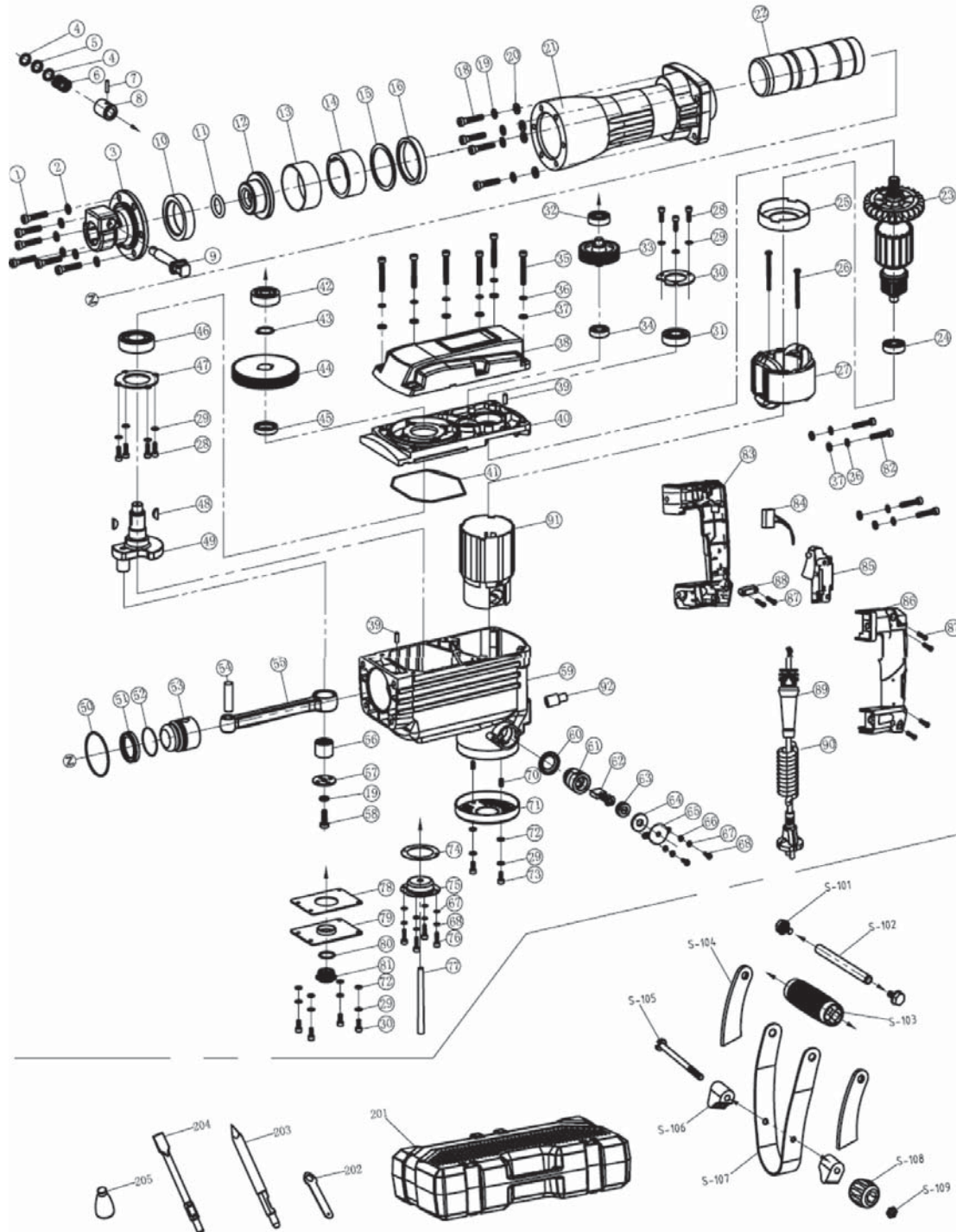


SPARE PARTS DRAWING SHEET FOR

# 1600W 15kg Breaker

Stock No.17768

Part No.BR15A



**Helpline: (023) 8049 4344. Sales Desk: (023) 8049 4333. General Enquiries: (023) 8026 6355.**

DRAPER TOOLS LTD, HURSLEY ROAD, CHANDLER'S FORD, EASTLEIGH, HANTS. SO53 1YF. U.K website: [www.drapertools.com](http://www.drapertools.com) e-mail: [sales@drapertools.com](mailto:sales@drapertools.com)