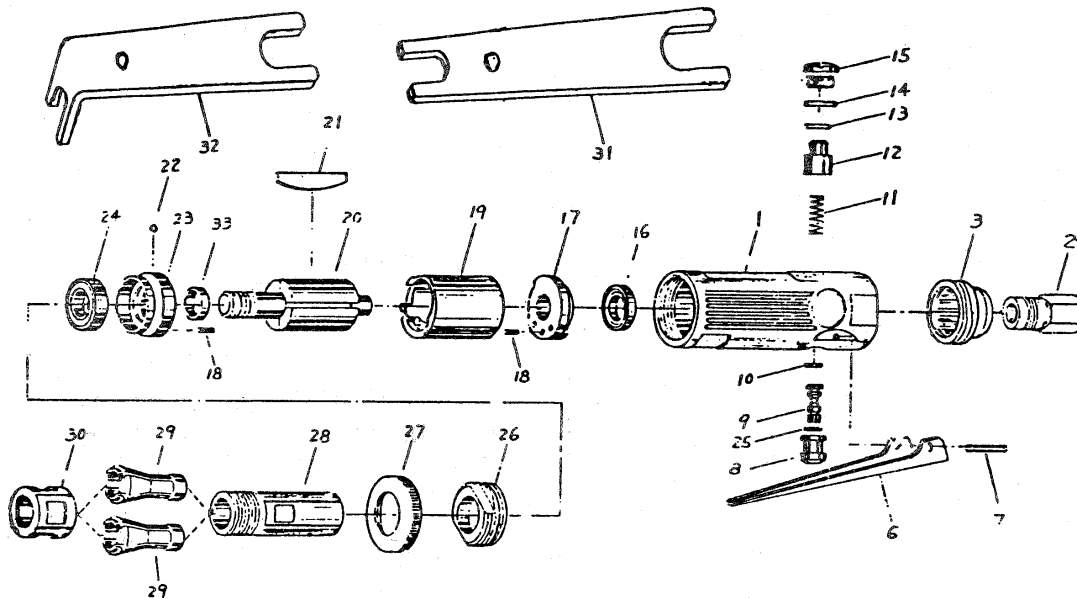


# PARTS LISTING

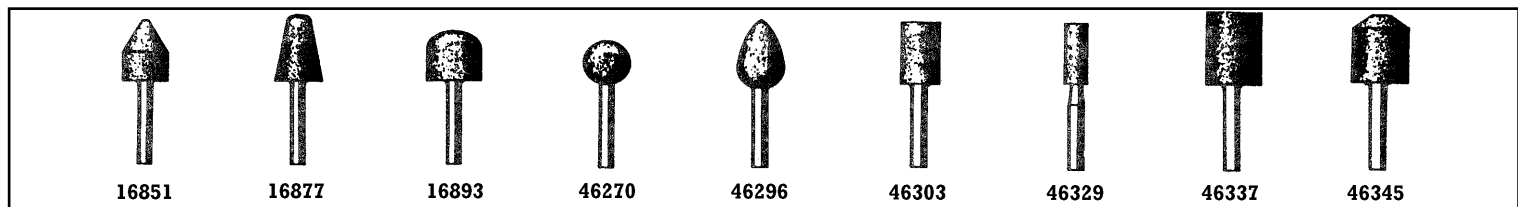
MACHINE: AIR DIE GRINDER  
 MACHINE STOCK No.20556.  
 MACHINE PART No.4217K.

06/98



KEY No.	STOCK No.	DESCRIPTION
1	20651	Body with bushing
2	25681	Air inlet
3	25682	End cap
6	25683	Control lever
7	25684	Spring pin
8	25685	Bush
9	25686	Valve
10	20654	O-ring
11	20655	Spring
12	20656	Speed regulator
13	20657	O-ring
14	20658	O-ring
15	25687	Valve screw
16	20659	Ball bearing
17	20660	Rear end plate
18	20661	Spring pin

KEY No.	STOCK No.	DESCRIPTION
19	20662	Cylinder
20	20663	Rotor
21	20664	Vanes
22	20665	Steel ball
23	20666	Front plate
24	20667	Ball bearing
25	20668	O-ring
26	20669	Bearing cap
27	25688	Nut
28	20670	Chuck casing
29	21831	Collet 1/8"
29A	21832	Collet 1/4"
30	25689	Clamp nut
31	21401	Wrench
32	21402	Wrench
33	20671	Bush



STOCK No.	PART No.	HEAD - mm		O/H mm
		Ø	HEIGHT	
16851	27411	20	32	14
16877	27412	20	32	14
16893	27413	25	25	17
46270	27415	20	20	20
46296	27416	20	32	14
46303	27417	16	32	20
46329	27418	10	25	20
46337	27419*	25	32	8
46345	27420*	25	32	8

**NOTES:**  
 O/H = Overhang - maximum permissible speed is determined on the overhang from the collet chuck - indicated as "O/H".  
 \* Standard corundum. 6mm diameter x 30mm long shank. Ideal for mower blades.

## POWER DIVISION HELP LINE: 01703 494344