



INSTRUCTIONS FOR RACKING UNIT 5 LEVEL - 200KG CAPACITY PER LEVEL

MODEL NO: **AP7200.V2**

Thank you for purchasing a Sealey product. Manufactured to a high standard, this product will, if used according to these instructions, and properly maintained, give you years of trouble free performance.

IMPORTANT: PLEASE READ THESE INSTRUCTIONS CAREFULLY. NOTE THE SAFE OPERATIONAL REQUIREMENTS, WARNINGS & CAUTIONS. USE THE PRODUCT CORRECTLY AND WITH CARE FOR THE PURPOSE FOR WHICH IT IS INTENDED. FAILURE TO DO SO MAY CAUSE DAMAGE AND/OR PERSONAL INJURY AND WILL INVALIDATE THE WARRANTY. KEEP THESE INSTRUCTIONS SAFE FOR FUTURE USE.



Refer to instructions

1. SAFETY

- WARNING!** Ensure Health & Safety, local authority, and general workshop practice regulations are adhered to when using this racking unit.
- ✓ Locate racking unit in a suitable work area.
- ✓ Keep the work area clean, uncluttered and ensure there is adequate lighting.
- WARNING!** Use racking unit on level and solid ground, preferably concrete. For added safety fix unit to a wall.
- ✓ Keep the racking unit clean and tidy in accordance with good workshop practice.
- ✓ Keep children and unauthorised persons away from the work area.
- ✗ **DO NOT** use the racking unit for any purpose other than that for which it is designed.
- ✗ **DO NOT** use the racking unit outdoors.
- ✗ **DO NOT** place the racking unit in a damp or wet location or an area where there is condensation.
- ✗ **DO NOT** clean the racking unit with any solvents which may damage the surfaces or the protective coating.
- ✗ **DO NOT** move the racking unit when there are items placed on it.
- ✗ **DO NOT** overload the racking unit.

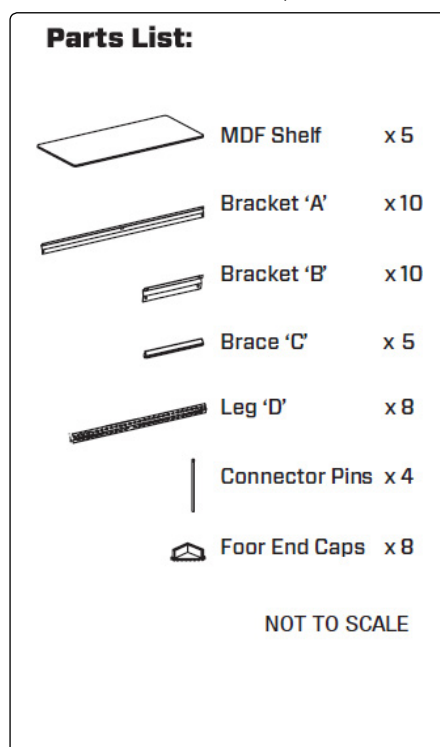
2. INTRODUCTION

Fully painted steel frame with five MDF shelves. 200kg capacity per level giving a maximum capacity of 1000kg per rack. Boltless design means no tools required to assemble. Two piece uprights allow use as a single bay rack or split into two separate shelf systems or workstations. Ideal for use in conjunction with Model No. AP7150C corner racking unit.

Dimensions W x D x H: 900 x 400 x 1830mm

3. CONTENTS

- 3.1. Unpack the unit and confirm that all the parts listed below are present.
- 3.2. Assemble the unit on a solid, level surface. Avoid carpet. A second person will be required to help with assembly.



4. ASSEMBLY

- 4.1. Assemble the racking unit in the sequence below, referencing the parts list overleaf.
 4.2. Use a rubber mallet to tap the brackets together.

Step 1

X 4 'D'

Note: Keyhole upright position
 Allow one keyhole free between the foot cap and the shelving bracket.

Place foot end caps onto the bottom of the 4 legs 'D'. Note: upright position. Place the shelving brackets 'A' onto the legs 'D'. A rubber mallet can be used to lightly tap all brackets into the keyholes of the legs into place. Allow one keyhole free between the foot and cap and shelving bracket.

Step 2

Use shelf bracket 'B' for the side brackets using the shelf bracket from Step 1 as a guide for height. Allow 1 keyhole free from the ground as shown in the diagram. Use same shelving brackets for opposite sides as shown in the diagram. Place brace 'C' as shown.

Step 3

Note: Keyhole Upright Position.

X 4

Place MDF board on bottom shelf to minimise buckling. Join the upper legs to the lower legs with the connector pins. Note upright position. Note: The legs are designed to sit directly on top of each other – don't overlap them.
 Handy Hint: A Flathead screwdriver may be used to tap in connector pins.

Step 4

Fix brackets 'B' so that the top rivet sits on the upper legs and the bottom rivets sit on the lower legs. Repeat with brackets 'A', followed by brace 'C' as shown.

Step 5

Fix brackets 'B' at the very top allowing room for the MDF board to sit flush against the legs. Repeat with brackets 'A'.

Step 6

Apply remaining brackets as above to desired height. Ensure that braces 'C' are fixed to all shelves.

Step 7

Place the MDF boards on shelves, ensure they are sitting flush against the edge of the shelf brackets.

Environmental Protection



Recycle unwanted materials instead of disposing of them as waste. All tools, accessories and packaging should be sorted, taken to a recycling centre and disposed of in a manner which is compatible with the environment. When the product becomes completely unserviceable and requires disposal, drain off any fluids (if applicable) into approved containers and dispose of the product and the fluids according to local regulations.

NOTE: It is our policy to continually improve products and as such we reserve the right to alter data, specifications and component parts without prior notice.

IMPORTANT: No liability is accepted for incorrect use of this product.

WARRANTY: Guarantee is 12 months from purchase date, proof of which will be required for any claim.



Sole UK Distributor, Sealey Group.
 Kempson Way, Suffolk Business Park,
 Bury St. Edmunds, Suffolk.
 IP32 7AR



01284 757500



01284 703534



www.sealey.co.uk



sales@sealey.co.uk