



INSTRUCTIONS FOR: HYDRAULIC DRUM LOADER

MODEL No: **DH03.V2**

Thank you for purchasing a Sealey product. Manufactured to a high standard, this product will, if used according to these instructions, and properly maintained, give you years of trouble free performance.



IMPORTANT: PLEASE READ THESE INSTRUCTIONS CAREFULLY. NOTE THE SAFE OPERATIONAL REQUIREMENTS, WARNINGS & CAUTIONS. USE THE PRODUCT CORRECTLY AND WITH CARE FOR THE PURPOSE FOR WHICH IT IS INTENDED. FAILURE TO DO SO MAY CAUSE DAMAGE AND/OR PERSONAL INJURY AND WILL INVALIDATE THE WARRANTY. KEEP THESE INSTRUCTIONS SAFE FOR FUTURE USE.



Refer to the instruction manual Wear Safety footwear Warning; Crushing of hands Wear protective gloves

1. SAFETY

1.1 GENERAL SAFETY

- ▲ **DANGER! When assembling, it is recommended that it is by two people.**
- ✓ Familiarise yourself with this products application and limitations, as well as the specific potential hazards peculiar to the drum loader.
- ✓ Maintain the drum loader in good condition including lubrication (use an authorised service agent for mechanical maintenance).
- ✓ Replace or repair damaged parts. *Use recommended parts only. Non authorised parts may be dangerous and will invalidate the warranty.*
- ✓ Keep the drum loader clean for best and safest performance.
- ✓ Operate the drum loader in a suitable working area for its function, level even concrete flooring (avoid tarmacadam), keep the area clean and tidy and ensure there is adequate lighting.
- ✓ Ensure the load is correctly secured before transporting.
- ✓ Keep hands and body clear of the rim grab mechanism when engaging the drum.
- ✓ Maintain correct balance and footing. Ensure the floor is not slippery and wear non-slip steel toe-capped shoes/boots.
- ✓ Keep children and unauthorised persons away from the working area.
- ✓ Use only the designed handle bars to push, pull and steer the drum loader.
- ✓ When not in use, release the pressure from the hydraulic unit and allow it to descend fully.
- ✗ **DO NOT** operate the drum loader if any parts are missing as this may cause failure and/or possible personal injury.
- ✗ **DO NOT** use to transport anything other than steel deep rimmed drums, capacity 205 litre.
- ✗ **DO NOT** exceed the maximum load or drum capacity.
- ✗ **DO NOT** make any modifications to the drum loader.
- ✗ **DO NOT** operate the drum loader when you are tired or under the influence of alcohol, drugs or intoxicating medication.
- **WARNING! The warnings, cautions and instructions in this manual cannot cover all possible conditions and situations that may occur. It must be understood by the operator that common sense and caution are factors which cannot be built into this product, but must be applied by the operator.**

2. INTRODUCTION

Ideal for loading and unloading barrel bunds, vans and general drum handling when forklift is not available. Suitable for 205ltr drums. Foot operated hydraulics, side handles and smooth-rolling wheels aid handling and manoeuvrability.

3. SPECIFICATIONS

Model:	DH03.V2
Maximum Drum Height:	1610mm
Leg Height:	65mm
Leg Length:	590mm
Width Inside Legs:	700mm
Maximum Width:	800mm
Overall Maximum Height:	1950mm
Overall Minimum Height:	1710mm
Weight:	67kg



Fulcrum Assembly
(rim grab jaws)

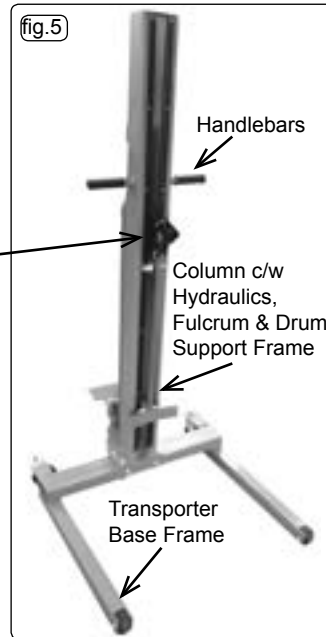
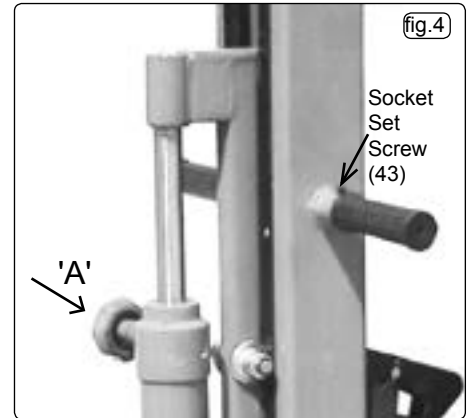
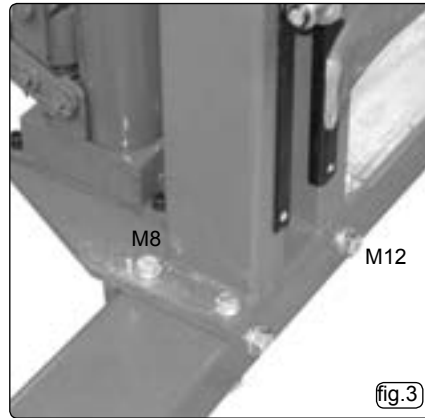
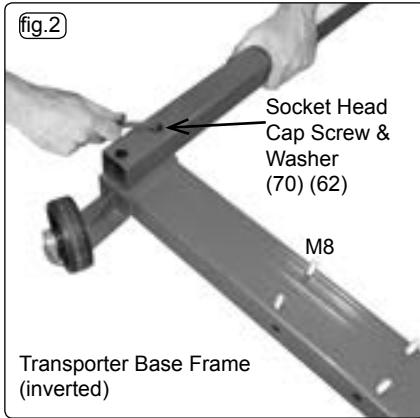


4. ASSEMBLY

4.1 Frame Assembly

Note! The drum loader is supplied partially assembled requiring minimal assembly. The central vertical column complete with hydraulics and grab mechanics are pre assembled ready to install on to the base transporter frame.

- 4.1.1 Remove all components, frame members, fixings etc. from the packing case except for the central column (see 4.1.3.).
- 4.1.2. Fit the base frame legs (71) pre assembled with castors to the box section base frame (69) with the socket head cap screws and spring washers (70) and (62). Tighten fully and stand the assembled base transporter frame on its castors. See fig.2.
- 4.1.3. Lift the central column, to the vertical with gloved hands (two people). Lift either inside the packing case to avoid the column runners, which are smeared with grease or remove from the packing case.
- 4.1.4. Bolt the vertical column to the base frame (fig.3) with 4 sets of M8 fixings (60) (61) (61) (62) (63). Tighten fully.
- 4.1.5. Bolt the vertical column to the base frame with 2 sets of M12 fixings (64) (32) (32) (65) (66). Tighten fully.
- 4.1.6. Fit the two plastic gripped steel handles (52) (53) to the top of the column (fig.4) with the two socket set screws (43).
- 4.1.7. Close the valve at the top of the hydraulic cylinder (fig.4) and foot pump to test, open the valve to return.



Viewed On Arrow 'A'

5. OPERATION

5.1 Lifting A Drum

- 5.1.1. Close the valve (fig.4) fully clockwise. Foot pump to elevate the fulcrum assembly lower jaw marginally below the drum rim external lip (fig.1).
- 5.1.2. Move the drum loader to bring the support frame yoke into contact with the drum (fig.1). Engage the top jaw with the drum rim inside diameter; this may require lowering the jaws slightly to obtain the fullest register.
 - ☐ **Warning! Ensure that the drum is as low as possible for transporting, elevating only if required at the destination. Ensure there are no obstacles enroute and the surface is suitable to take the weight of the fully laden drum.**
- 5.1.3. Ensure that the drum rim is engaged with the fulcrum assembly jaws (fig.1). With both hands on the handle bars, foot pump to raise the drum clear of the ground.
- 5.1.4. Use the handle bars (fig.4) to push, pull and steer the drum loader.

5.2. Lowering A Drum

- 5.2.1. To lower the drum slowly, turn the release valve anticlockwise in a controlled manner until the drum is standing firmly on the ground.
- 5.2.2. Release the fulcrum assembly jaws by lifting the top jaw from the drum rim manually and pull the drum loader away from the drum.

6. MAINTENANCE

- 6.1. Regularly check the drum loader chassis for rigidity including the integrity of the castors.
- 6.2. Regularly check the fulcrum assembly for wear. Replace worn jaws which may cause poor rim grip.
- 6.3. Regularly check the linkages and pins for wear or missing retaining split pins which could cause lifting failure.
- 6.4. Keep the column guides lubricated with grease as supplied. **DO NOT** contaminate the steering handles with grease.



Environmental Protection

Recycle unwanted materials instead of disposing of them as waste. All tools, accessories and packaging should be sorted, taken to a recycling centre and disposed of in a manner which is compatible with the environment. When the product becomes completely unserviceable and requires disposal, drain off any fluids (if applicable) into approved containers and dispose of the product and the fluids according to local regulations.

IMPORTANT: NO RESPONSIBILITY IS ACCEPTED FOR INCORRECT USE OF THE DRUM LOADER.

Hydraulic products are only repaired by local service agents. We have service/repair agents in all parts of the UK.

DO NOT RETURN PRODUCT TO US. Please telephone us on 01284 757500 to obtain the address and phone number of your local agent.

If the product is under guarantee please contact your dealer.

NOTE: It is our policy to continually improve products and as such we reserve the right to alter data, specifications and component parts without prior notice.

IMPORTANT: No liability is accepted for incorrect use of product.

WARRANTY: Guarantee is 12 months from purchase date, proof of which will be required for any claim.



Sole UK Distributor, Sealey Group,
Kempson Way, Suffolk Business Park,
Bury St. Edmunds, Suffolk,
IP32 7AR

☎ 01284 757500

☎ 01284 703534



www.sealey.co.uk

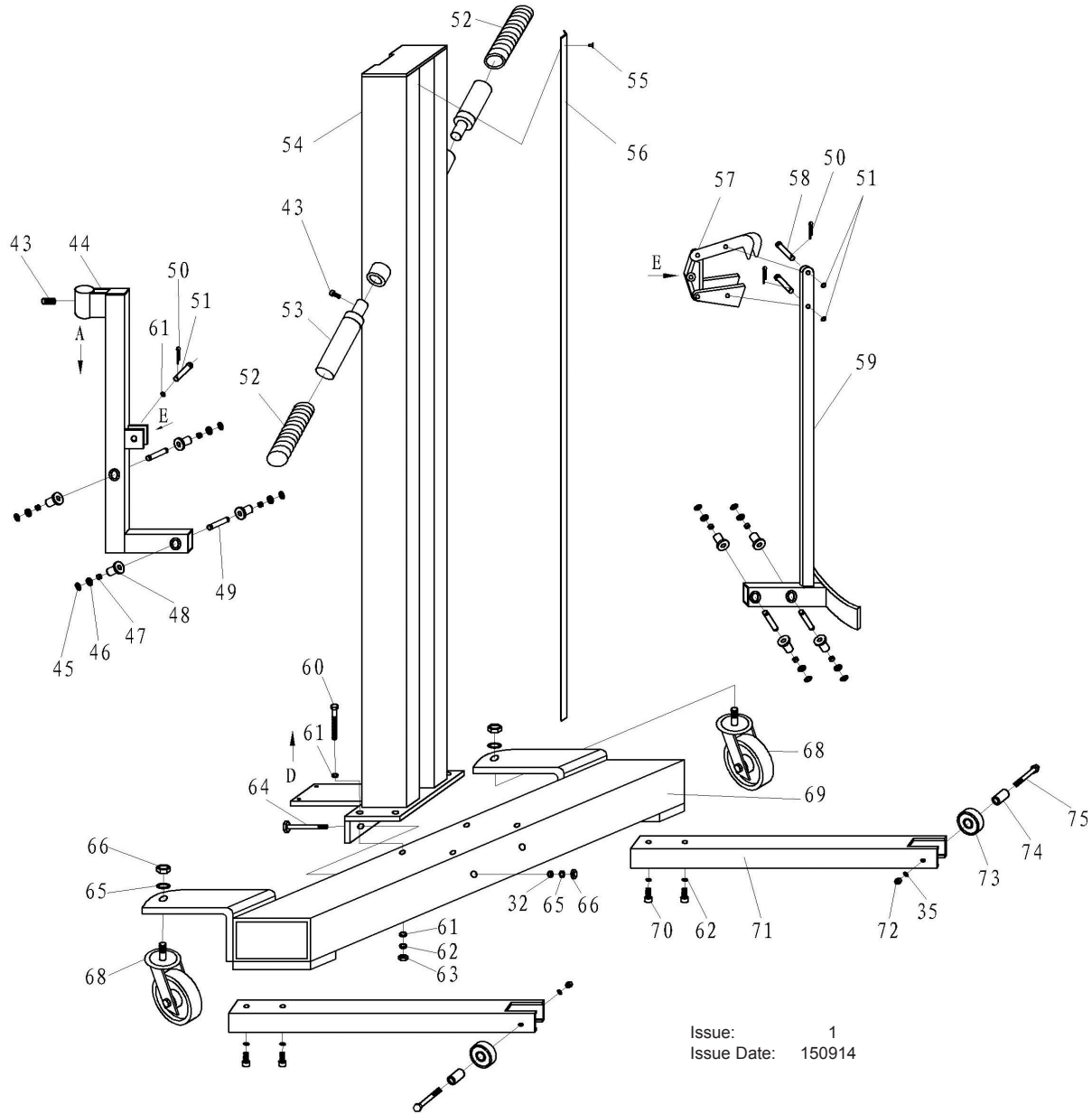


sales@sealey.co.uk



PARTS FOR:
HYDRAULIC DRUM TRUCK & VAN LOADER 205ltr
 MODEL: **DH03.V2**

1 OF 2



Issue: 1
 Issue Date: 150914

ITEM	PART NO	DESCRIPTION	ITEM	PART NO	DESCRIPTION	ITEM	PART NO	DESCRIPTION
1	DH03.V2-01	BASE	13	DH03.V2-13	SPRING PIN	30	DH03.V2-30	PIN
2	DH03.V2-02	O-RING	14	DH03.V2-14	GRIP	31	DH03.V2-31	SPLIT PIN
3	DH03.V2-03	RESERVOIR	15	DH03.V2-15	BLOCK	32	DH03.V2-32	WASHER
4	DH03.V2-04	OIL PLUG	16	DH03.V2-16	SET SCREW	33	DH03.V2-33	CONNECT FRAME (PEDAL)
5	DH03.V2-05	STEEL BALL	17	DH03.V2-17	WASHER	34	DH03.V2-34	BOLT
6	DH03.V2-06	WASHER	18	DH03.V2-18	DUST PROTECTOR	35	DH03.V2-35	SPRING WASHER
7	DH03.V2-07	CYLINDER	19	DH03.V2-19	SPRING	36	DH03.V2-36	PLAIN WASHER
8	DH03.V2-08	O-RING	20	DH03.V2-20	PISTON	37	DH03.V2-37	THREAD VALVE
9	DH03.V2-09	HEAD	23	DH03.V2-23	X-RING SEAL	38	DH03.V2-38	SPRING
10	DH03.V2-10	O-RING	24	DH03.V2-24	PUMP HOUSING	39	DH03.V2-39	O-RING
11	DH03.V2-11	O-RING	26	DH03.V2-26	WASHER	40	DH03.V2-40	BOLT
12	DH03.V2-12	SCREW ROD	27	DH03.V2-27	LINK	76	DH03.V2-76	ADJUSTMENT SCREW

NOTE: It is our policy to continually improve products and as such we reserve the right to alter data, specifications and component parts without prior notice.

IMPORTANT: No liability is accepted for incorrect use of product.

WARRANTY: Guarantee is 12 months from purchase date, proof of which will be required for any claim.

INFORMATION: For a copy of our latest catalogue and promotions call us on 01284 757525 and leave your full name and address, including postcode.



Sole UK Distributor,
 Sealey Group, Kempson Way,
 Suffolk Business Park,
 Bury St Edmunds, Suffolk, IP32 7AR



01284 757500



01284 703534



www.sealey.co.uk

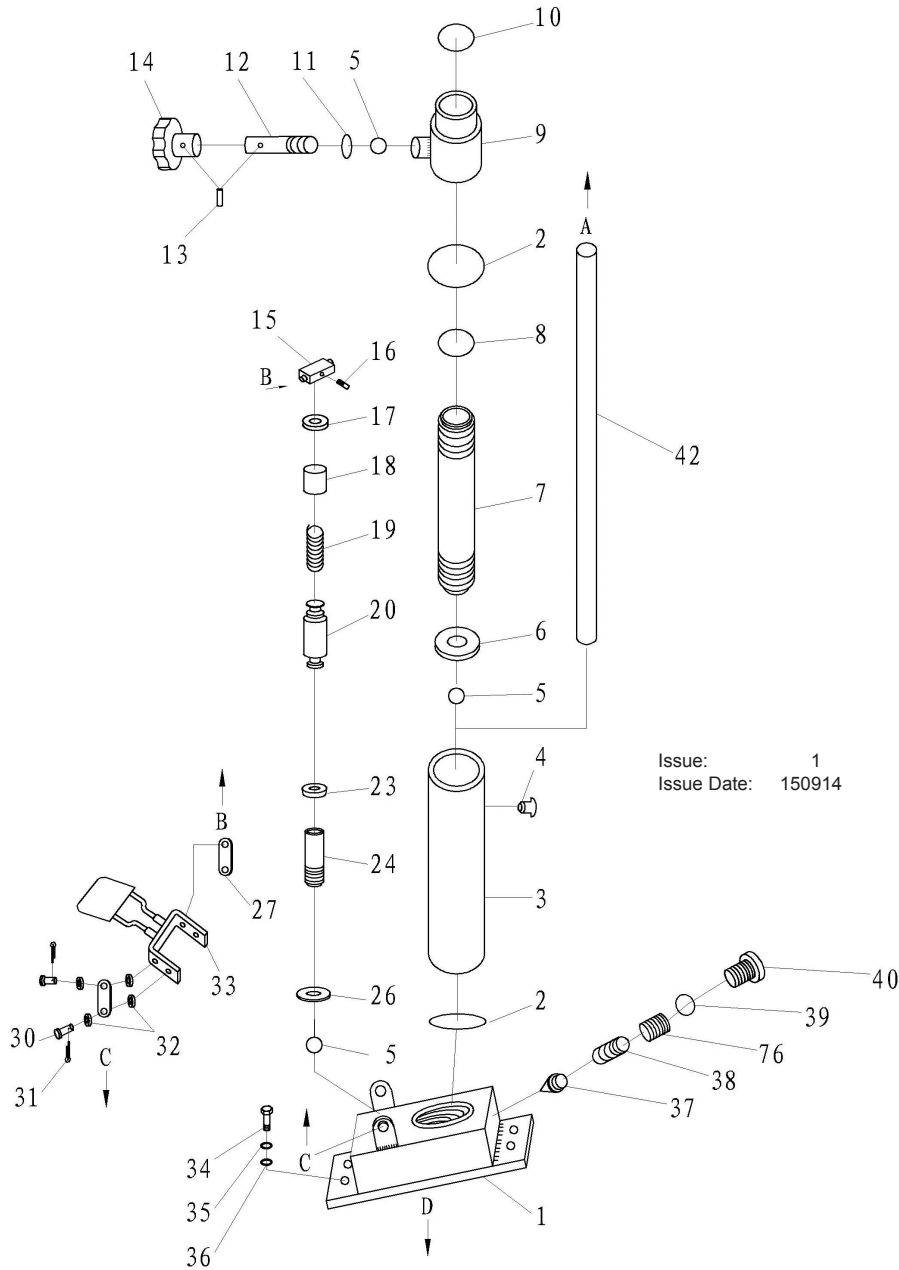


sales@sealey.co.uk



PARTS FOR:
HYDRAULIC DRUM TRUCK & VAN LOADER 205ltr
 MODEL: **DH03.V2**

2 OF 2



Issue: 1
 Issue Date: 150914

ITEM	PART NO	DESCRIPTION	ITEM	PART NO	DESCRIPTION	ITEM	PART NO	DESCRIPTION
32	DH03.V2-32	WASHER	52	DH03.V2-52	HANDLE GRIP	64	DH03.V2-64	BOLT
35	DH03.V2-35	SPRING WASHER	53	DH03.V2-53	HANDLE	65	DH03.V2-65	SPRING WASHER
42	DH03.V2-42	RAM	54	DH03.V2-54	POST	66	DH03.V2-66	NUT
43	DH03.V2-43	SET SCREW	55	DH03.V2-55	SCREW	68	DH03.V2-68	SWIVEL CASTOR
44	DH03.V2-44	LIFTING ARM	56	DH03.V2-56	GUIDE PLATE	69	DH03.V2-69	BASE FRAME
45	DH03.V2-45	RETAINING RING	57	DH03.V2-57	FULCRUM ASS'Y	70	DH03.V2-70	SCREW
46	DH03.V2-46	WASHER	58	DH03.V2-58	PIN	71	DH03.V2-71	LEG
47	DH03.V2-47	BUSHING	59	DH03.V2-59	SUPPORT FRAME	72	DH03.V2-72	NUT
48	DH03.V2-48	ROLLER	60	DH03.V2-60	BOLT	73	DH03.V2-73	WHEEL
49	DH03.V2-49	PIN	61	DH03.V2-61	WASHER	74	DH03.V2-74	BUSHING
50	DH03.V2-50	SPLIT PIN	62	DH03.V2-62	SPRING WASHER	75	DH03.V2-75	BOLT
51	DH03.V2-51	PIN	63	DH03.V2-63	NUT			

NOTE: It is our policy to continually improve products and as such we reserve the right to alter data, specifications and component parts without prior notice.

IMPORTANT: No liability is accepted for incorrect use of product.

WARRANTY: Guarantee is 12 months from purchase date, proof of which will be required for any claim.

INFORMATION: For a copy of our latest catalogue and promotions call us on 01284 757525 and leave your full name and address, including postcode.



Sole UK Distributor,
 Sealey Group, Kempson Way,
 Suffolk Business Park,
 Bury St Edmunds, Suffolk, IP32 7AR



01284 757500



01284 703534



www.sealey.co.uk



sales@sealey.co.uk



EC DECLARATION OF CONFORMITY

We the sole importers into the UK, hereby declare that the equipment described below

Description and Function: **Hydraulic Drum Truck & Van Loader 205ltr**

Model/Type: **DH03.V2**

Manufacturing Date / Serial number (optional):

Manufacturer's authorised representative within the EC: **Jack Sealey Ltd. Kempson Way, Suffolk Business Park, Bury St. Edmunds, Suffolk, IP32 7AR**

Conforms to the requirements of the following Directives, as indicated.

- 2006/42/EC Machinery Directive
- 2005/88/EC Outdoor Noise Emissions Directive
- 2006/95/EC Low Voltage Directive
- 2012/19/EU WEEE Directive
- 2004/108/EC EMC Directive
- 2011/65/EU RoHS Directive
- 2009/142/EC Gas Appliances Directive
- 97/23/EC Pressure Equipment Directive
- 2009/105/EC the Simple Pressure Vessels Directive

And the following harmonised standard(s)

.....

.....

.....

.....

Additional technical standards and specifications (if applicable):

.....

Technical file compiled by: **Jack Sealey Ltd.**

Signed: *Steve Buckle*

Date: 08-Apr-2014

Place: Bury St.Edmunds.

Name: Steve Buckle

Position: Marketing Director

Being the responsible person appointed by the manufacturer.



Sealey Power Products, Kempson Way, Suffolk Business Park, Bury St. Edmunds, Suffolk, IP32 7AR

01284 757500

01284 703534

sales@sealey.co.uk

www.sealey.co.uk