

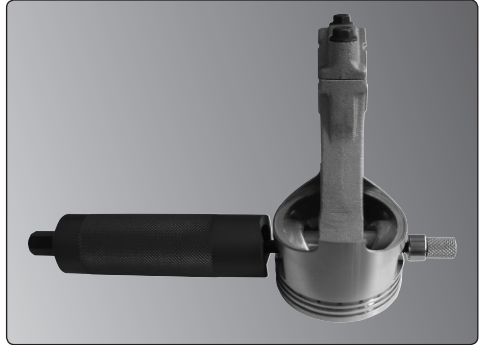
Thank you for purchasing a Sealey product. Manufactured to a high standard this product will, if used according to these instructions and properly maintained, give you years of trouble free performance.



IMPORTANT: PLEASE READ THESE INSTRUCTIONS CAREFULLY. NOTE THE SAFE OPERATIONAL REQUIREMENTS, WARNINGS AND CAUTIONS. USE THE PRODUCT CORRECTLY AND WITH CARE FOR THE PURPOSE FOR WHICH IT IS INTENDED. FAILURE TO DO SO MAY CAUSE DAMAGE AND/OR PERSONAL INJURY AND WILL INVALIDATE THE WARRANTY. PLEASE KEEP INSTRUCTIONS SAFE FOR FUTURE USE.

1. SAFETY INSTRUCTIONS

- WARNING!** Ensure all Health and Safety, local authority, and general workshop practice regulations are strictly adhered to when using tools.
- DO NOT** use tools if damaged or worn.
- Maintain the tools in good and clean condition for best and safest performance.
- Ensure all threads are clean and well lubricated.
- Always check that remover is correctly assembled and is square with the workpiece.
- Wear suitable clothing to avoid snagging. Do not wear jewellery. Tie back long hair.
- Wear approved eye protection. A full range of personal safety equipment is available from your Sealey dealer.
- DO NOT** hit workpiece or remover with a hammer if workpiece has not moved with maximum force applied.



IMPORTANT: Always refer to the vehicle manufacturer's service instructions, or proprietary manual, to establish the correct procedure and data. These instructions for use are provided as a guide only.

2. DESCRIPTION & SPECIFICATION

For safe and easy removal of gudgeon pins. Minimises possible damage done to the bearing at either ends of the con rod or to the con rod itself. Supplied with 5 dies ranging from 13-22mm.

Shaft Ø:	8mm
Die Ø:	13, 15, 16, 19, 22mm
Maximum Piston Ø:	85mm
Maximum Travel:	100mm



3. OPERATION

- 3.1 Undo the knurled retainer and remove the dies from the threaded bar. Ensure the threaded bar is fully wound in.
- 3.2 Choose the die that is the closest fit to the gudgeon pin.
- 3.3 Remove the circlips from either side of the gudgeon pin (if fitted) and insert the threaded bar. Fig.1.
- 3.4 Slide the die over the threaded bar, note that the dies have a recess which must face outwards. Fig.2a.
- 3.5 Screw on the knurled retainer (left hand thread), note the shoulder on the retainer will mate with the recess on the die. Screw down until the die is pressing against the gudgeon pin. Fig.3. The main body has two elliptical cut outs and these should be orientated so they fit against the piston. Fig.1.
- 3.6 When you are sure that the die is central on the gudgeon pin, proceed using a 14mm spanner to turn the threaded bar nut anti-clockwise to start pulling the pin.

Fig.2a



Fig.2b



- 3.7 The gudgeon pin will start to draw through the piston (Fig.4). If the threaded bar nut requires excessive force stop and check for obstructions, make sure the die is central and that all circlips have been removed.
- 3.8 Finally remove the tool from the piston with the gudgeon pin attached. Fig.5
- 3.9 Unscrew the knurled nut and remove the die and gudgeon pin.

NOTE: It is our policy to continually improve products and as such we reserve the right to alter data, specifications and component parts without prior notice.

IMPORTANT: No liability is accepted for incorrect use of this product.
WARRANTY: Guarantee is 12 months from purchase date, proof of which will be required for any claim.

INFORMATION: For a copy of our latest catalogue and promotions call us on 01284 757525 and leave your full name and address, including postcode.

Fig.1

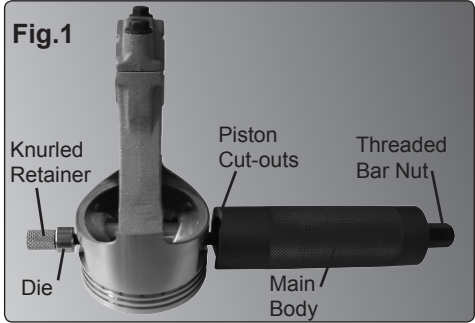


Fig.3

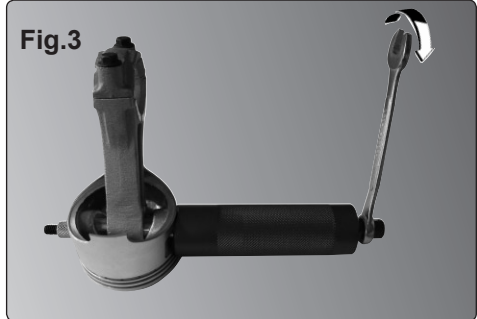


Fig.4

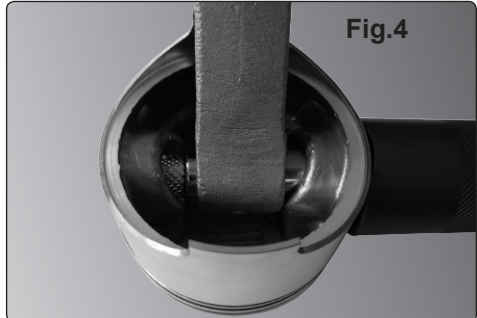


Fig.5

