

Thank you for purchasing a Sealey product. Manufactured to a high standard this product will, if used according to these instructions and properly maintained, give you years of trouble free performance.



IMPORTANT: PLEASE READ THESE INSTRUCTIONS CAREFULLY. NOTE THE SAFE OPERATIONAL REQUIREMENTS, WARNINGS AND CAUTIONS. USE THE PRODUCT CORRECTLY AND WITH CARE FOR THE PURPOSE FOR WHICH IT IS INTENDED. FAILURE TO DO SO MAY CAUSE DAMAGE AND/OR PERSONAL INJURY AND WILL INVALIDATE THE WARRANTY. PLEASE KEEP INSTRUCTIONS SAFE FOR FUTURE USE.

TECHNICAL HELP LINE No. 01284 757505

Please register your product with Sealey by completing the registration form on-line at www.sealey.co.uk Navigate to Register Product. By registering your product you can take advantage of Sealey product and technical updates via email.

1. SAFETY INSTRUCTIONS

- WARNING!** Ensure that Health and Safety, local authority and general workshop practice regulations are strictly adhered to.
- DO NOT** use the tool if it, or any attachment, is damaged.
- Maintain the tool in a good, clean condition for the best and safest performance.
- If required, ensure that the vehicle to be worked on is adequately supported with axle stands or ramps and is chocked.
- Put transmission in PARK (automatic transmission) or NEUTRAL (manual transmission) and make sure the parking brake is engaged.
- Wear approved eye protection. A full range of personal safety equipment is available from your Sealey dealer.
- Wear suitable clothing to avoid snagging. Do not wear jewellery and tie back long hair.
- WARNING!** Use extreme caution when working around the ignition coil, distributor cap, ignition wires and spark plugs. These components create hazardous voltages when the engine is running.
- DO NOT** connect or disconnect any test equipment with the ignition on, or the engine running.
- Keep a fire extinguisher nearby that is suitable for petrol/chemical/electrical fires.
- Account for all tools and parts being used and do not leave any in the engine bay.
- Keep the tool dry, clean and free from oil, water and grease. Use a mild detergent on a clean cloth to clean the outside of the tool.
- Ensure that the vehicle is parked outside, on a non-flammable surface and away from any combustibles.
- WARNING! The exhaust system could reach temperatures above 300°C. Also exhaust gases are poisonous.**
IMPORTANT: Always refer to the vehicle manufacturer's service instructions to establish the current procedure and data. These instructions are provided as a guide only.
- WARNING! The warnings and instructions discussed in this manual cannot cover all possible conditions and situations that may occur. It must be understood that common sense and caution are factors which cannot be built into this product, but must be applied by the operator.**
- When not in use, store the tool away in its box, in a cool, dry, safe, childproof location.

2. INTRODUCTION

Essential tool for extinguishing the Particulate Filter light after the filter has been replaced. Also resets the ELOYS additive after it has been topped up and burns any particles that have clogged the filters (regenerate). Powered by connection to the vehicle.



3. FEATURES / OPERATION

The VS8626 tool:

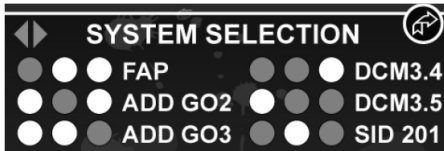
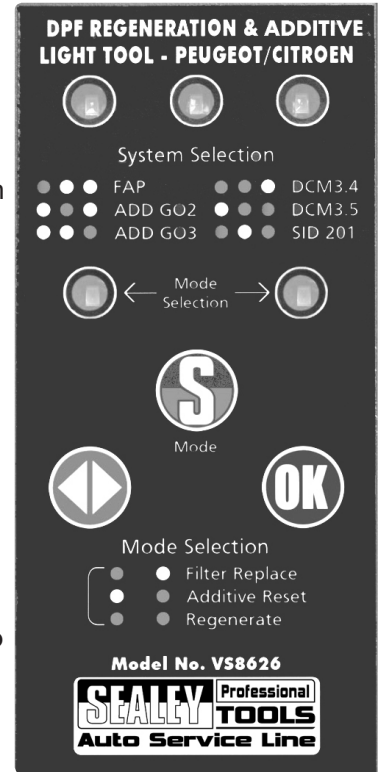
- Is compatible with the latest CAN vehicles.
- Enables Fuel Additive functions for Replacing Filters, resetting Additive Reset lights and performing the Regenerate Process.

The new VS8626 Peugeot / Citroen Particulate tool has been designed to extinguish the Particulate Filter Light after the filter has been replaced, re-set the ELOYS additive light after it has been topped up, and also burn any particles that have clogged the filter (regenerate).

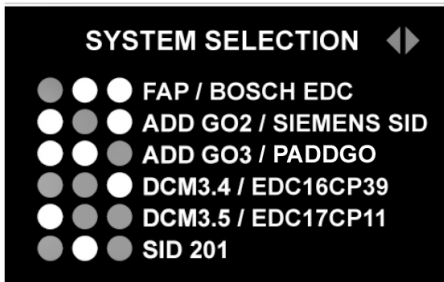
Filter Replace – This is a light on the dashboard that is illuminated when the filter is clogged and needs changing, or potentially regenerating.

Additive Reset – This is a light on the dashboard that is illuminated when the fuel additive is empty or low and needs refilling.

Regenerate Filter – This will increase the engine speed to around 4000 RPM, which in turn will increase the temperature of the exhaust gases; this causes the soot that has built up on the filter to be burnt off.



System Selection for different Fuel Additive Systems.

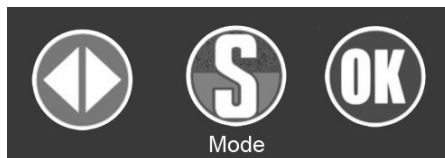


System selection full description.



Mode Selection for functions.

Function Buttons

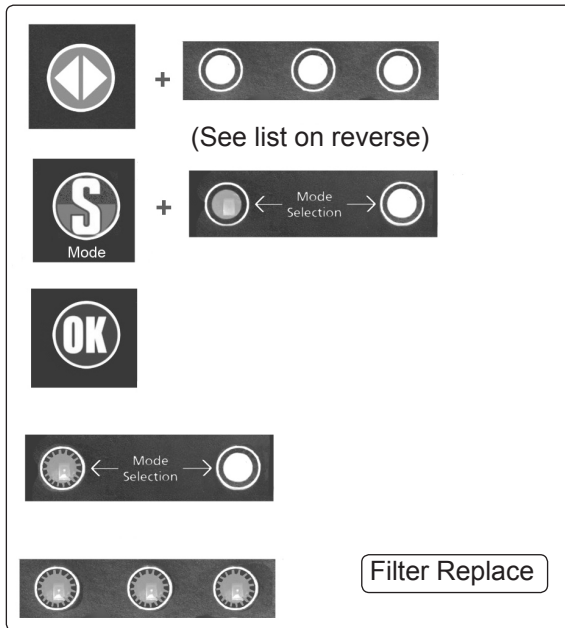


Function Button Mode Button OK Button

3.1. Vehicle Set-Up

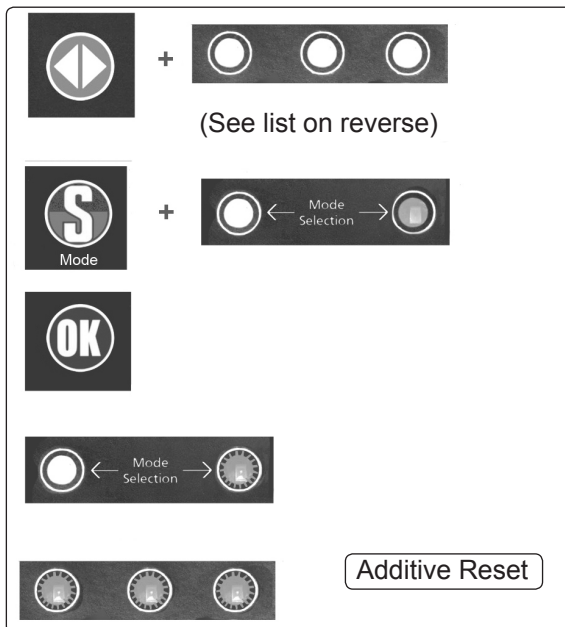
- 3.1.1. Ensure that the vehicle is parked outside, on a non-flammable surface and away from any combustibles (the exhaust system could reach temperatures above 300°C). That it's engine is at working temperature, with at least a ¼ tank of fuel and that there are no fault codes stored.
- 3.1.2. Ensure that the vehicle's ignition is turned off.
- 3.1.3. Connect the tool to the correct diagnostic socket on the vehicle, refer to the vehicle owner's manual for it's location.
- 3.1.4. Turn on the vehicle's ignition.

Note: As part of the process, a clear codes message will be sent to the vehicle (any faults that are permanent on the vehicle will remain until the fault is fixed).



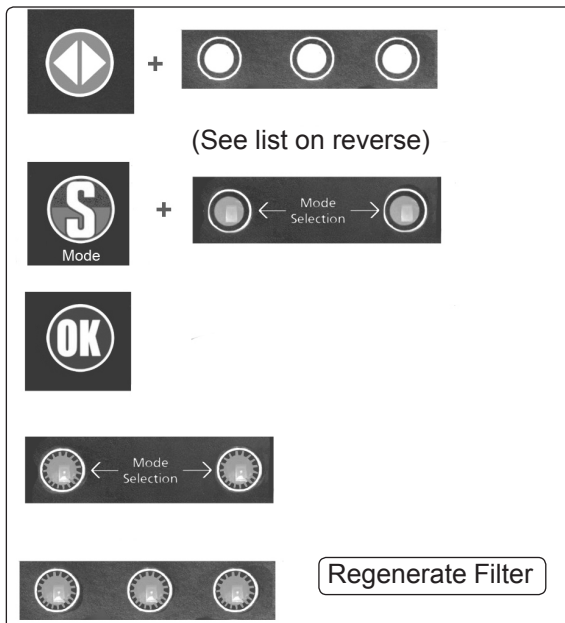
3.2. Filter Replace

- 3.2.1. Press the Function button to select the appropriate system (There is a full list of systems on the rear of the tool).
- 3.2.2. Press Mode button to select correct type (Filter Replace).
- 3.2.3. Press the 'OK' button to perform the function.
- 3.2.4. Once the function has completed, the Mode LED will flash to indicate a successful reset.
- 3.2.5. If the function is unsuccessful, the 3 System Selection LEDs will flash.



3.3. Additive Reset

- 3.3.1. Press the Function button to select the appropriate system (There is a full list of systems on the rear of the tool).
- 3.3.2. Press Mode button to select correct type (Additive Reset).
- 3.3.3. Press the 'OK' button to perform the function.
- 3.3.4. Once the function has completed, the Mode LED will flash to indicate a successful reset.
- 3.3.5. If the function is unsuccessful, the 3 System Selection LEDs will flash.
- 3.3.6. Disconnect tester, open filler cap for more than 5 seconds, then close again.



3.4. Regenerate Filter

- 3.4.1. Start the vehicle's engine and allow it to warm up.
- 3.4.2. Press the Function button to select the appropriate system (There is a full list of systems on the rear of the tool).
- 3.4.3. Press Mode button to select correct type (Regenerate Filter).
- 3.4.4. Press the 'OK' button to perform the function.
- 3.4.5. Once the function has completed, the Mode LED will flash to indicate a successful reset.
- 3.4.6. If the function is unsuccessful, the 3 System Selection LEDs will flash.
- 3.4.7. Switch the ignition off, unplug the tool and turn ignition on.

NOTE: Regeneration takes around 15 mins in total (2 mins running at idle, 8 mins at 4000rpm and then 5 mins at idle). Ensure that rear / exhaust area of the vehicle is kept clear of people for this period.

4. APPLICATION LIST

MAKE/MODEL	SYSTEM	ENGINE	YEAR
CITROEN			
C3 Picasso	PADDGO	ALL CODES	08-11
C4	PADDGO	ALL CODES	06-11
C4 Picasso	PADDGO	ALL CODES	06-11
C5	DELPHI DCM 3.4 FAP	RHR	07-10
C5	ADDGO 2	RHS	00-04
C5	ADDGO 2	RHY	00-04
C5	ADDGO 2	RHZ	00-04
C5	MARELLI FAP	4HX (DW12TED4)	00-04
C5	MARELLI FAP	4HX (DW12TED4)	00-04
C5	MARELLI FAP	RHR	00-04
C5	EDC16CP39 FAP	4HP	07-10
C5	EDC16CP39 FAP	4HR	07-10
C5	EDC16CP39 FAP	4HS	07-10
C5	EDC16CP39 FAP	4HT	07-10
C5	SIEMENS SID 201 FAP	UHZ	07-10
C5	Bosch EDC17CP11		09-10
C5	ADDGO 3		04-08
C6	EDC16CP39 FAP	4HP	07-10
C6	EDC16CP39 FAP	4HR	07-10
C6	EDC16CP39 FAP	4HS	07-10
C6	EDC16CP39 FAP	4HT	07-10
C6	SIEMENS SID 201 FAP	UHZ	07-10
C6	Bosch EDC17CP11		09-10
C8	MARELLI FAP	4HW (DW12ATED4)	02-07
C8	ADDGO 3		06-08
BERLINGO	ADDGO 2	RHY	00-04
C-CROSSER	EDC16CP39 FAP	4HN	07-11
XSARA PICASSO	ADDGO 2	RHY	00-04
PEUGEOT			
207	PADDGO	ALL CODES	09-11
307	DELPHI DCM 3.4 FAP	RHF	07-10
307	DELPHI DCM 3.4 FAP	RHL	07-10
307	DELPHI DCM 3.4 FAP	RHR	07-10
307	ADDGO 2		00-04
307	ADDGO 3		05-07
308	DELPHI DCM 3.4 FAP	RHF	07-11
308	DELPHI DCM 3.5 FAP	RHH	07-11
308	DELPHI DCM 3.4 FAP	RHL	07-11
308	DELPHI DCM 3.4 FAP	RHR	07-11
308	PADDGO	ALL CODES	08-11
406	MARELLI FAP	4HZ (DW12ATED)	00-04
407	DELPHI DCM 3.4 FAP	RHF	07-11
407	DELPHI DCM 3.4 FAP	RHL	07-11
407	DELPHI DCM 3.4 FAP	RHR	07-11
407	EDC16CP39 FAP	4HP	07-11
407	EDC16CP39 FAP	4HR	07-11
407	EDC16CP39 FAP	4HS	07-11
407	EDC16CP39 FAP	4HT	07-11
407	SID201 FAP	UHZ	07-11
407	Bosch EDC17CP11		09-11
407	ADDGO 3		06-08
607	MARELLI FAP	4HX (DW12ATED)	99-04
806	ADDGO 2	RHY	00-04
807	MARELLI FAP	4HW (DW12ATED4)	02-04
807	EDC16CP39 FAP	4HP	07-11
807	EDC16CP39 FAP	4HR	07-11
807	EDC16CP39 FAP	4HS	07-11
807	EDC16CP39 FAP	4HT	07-11
807	ADDGO 3		05-07
1007	PADDGO	ALL CODES	04-09
3008	DELPHI DCM 3.5 FAP	RHH / RHE	07-11
3008	PADDGO	ALL CODES	09-11
5008	DELPHI DCM 3.5 FAP	RHH / RHE	09-11
4007	EDC16CP39 FAP	4HN	07-11
406 COUPE	MARELLI FAP	4HZ (DW12ATED)	00-04
PARTNER	ADDGO 2	RHY	00-04



Environmental Protection.

Recycle unwanted materials instead of disposing of them as waste. All tools, accessories and packaging should be sorted, taken to a recycle centre and disposed of in a manner which is compatible with the environment.

When the product is no longer required, it must be disposed of in an environmentally protective way.

NOTE: It is our policy to continually improve products and as such we reserve the right to alter data, specifications and component parts without prior notice.

IMPORTANT: No liability is accepted for incorrect use of this product.

WARRANTY: Guarantee is 12 months from purchase date, proof of which will be required for any claim.

INFORMATION: For a copy of our latest catalogue and promotions call us on 01284 757525 and leave your full name and address, including postcode.



Sole UK Distributor, Sealey Group,
Kempson Way, Suffolk Business Park,
Bury St. Edmunds, Suffolk,
IP32 7AR

01284 757500

01284 703534

www.sealey.co.uk

sales@sealey.co.uk