



INSTRUCTIONS FOR:
WINDSCREEN REPAIR KIT
 MODEL No: **WK01**

Thank you for purchasing a Sealey Product. Manufactured to a high standard this product will, if used according to these instructions and properly maintained, give you years of trouble free performance.



IMPORTANT: PLEASE READ THESE INSTRUCTIONS CAREFULLY. NOTE THE SAFE OPERATIONAL REQUIREMENTS, WARNINGS AND CAUTIONS. USE THIS PRODUCT CORRECTLY AND WITH CARE FOR THE PURPOSE FOR WHICH IT IS INTENDED. FAILURE TO DO SO MAY CAUSE DAMAGE AND/OR PERSONAL INJURY AND WILL INVALIDATE THE WARRANTY. PLEASE KEEP INSTRUCTIONS SAFE FOR FUTURE USE.

1. SAFETY INSTRUCTIONS

1.1 GENERAL SAFETY

- WARNING!** Ensure Health & Safety, local authority, and general workshop practice regulations are adhered to when using this tool.
- WARNING!** This kit contains glue. If you require a safety data sheet, contact your Sealey dealer.
- WARNING!** Familiarise yourself with the specific applications and limitations of the kit, as well as any potential hazards.
- ✓ This kit should be used in conjunction with inspection maintenance procedures recommended in the vehicle manufacturer's manual.
- ✓ Ensure that the kit is correct for the task.
- ✓ Wear the appropriate personal protective equipment for the task. A full range is available from your Sealey dealer.
- ✗ **DO NOT** use the kit for any purpose other than that for which it is designed.
- ✓ Ensure there is adequate lighting prior to using the kit. A range of inspection lamps are available from your Sealey dealer.
- ✓ Keep children and unauthorised persons away from the working area.
- ✗ **DO NOT** use the kit if any parts are damaged or missing, as this may cause failure and/or personal injury.
- ✗ **DO NOT** use the kit when you are tired, or under the influence of alcohol, drugs or intoxicating medication.
- ✓ After use, store in a safe, dry childproof area.

NOTE: If the damage is right in front of the driver - in the area known as 'Zone A' for MOT testing - damage up to 10mm diameter will normally result in a MOT failure. Also damage greater than 40mm in the remaining swept area will normally result in a failure. Always refer to the latest MOT information to make sure the repair is legal. Refer to fig.1. Zone 'A' is:

- in the swept area of the windscreen.
- 290mm wide.
- centred on the centre of the steering wheel.

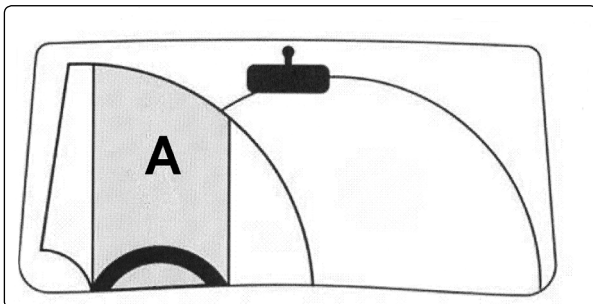


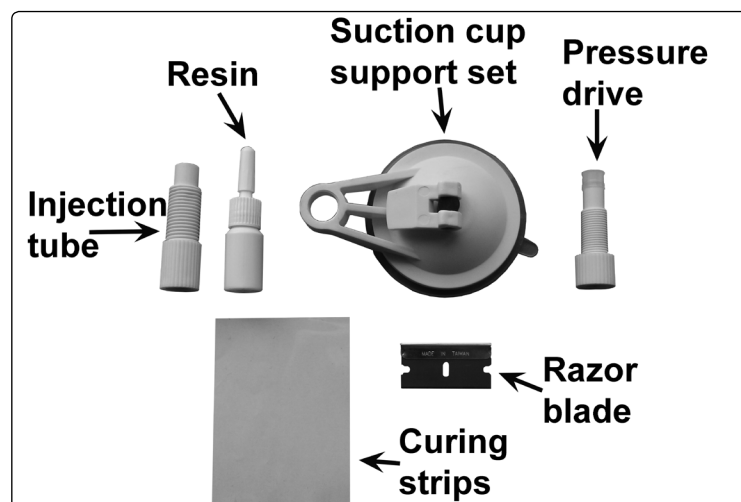
Fig.1

2. INTRODUCTION

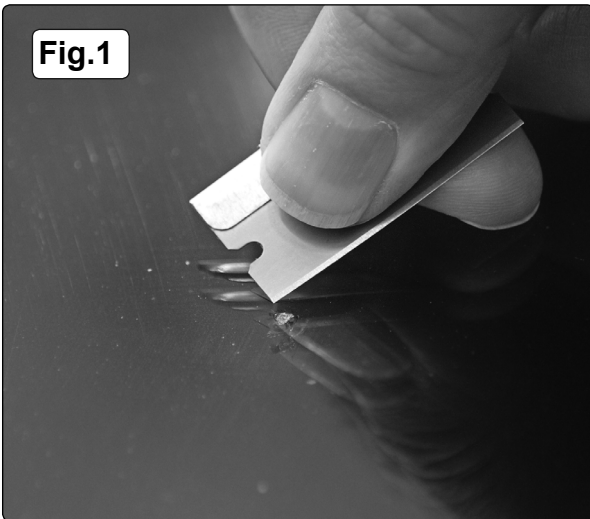
Specialised windscreen applicator and resin, designed to penetrate deep inside chips and cracks giving an almost invisible repair. Reinforces the damaged area preventing further spread and costly windscreen replacement. Uses a tough resin formula which can be used for multiple repairs.

3. SPECIFICATION

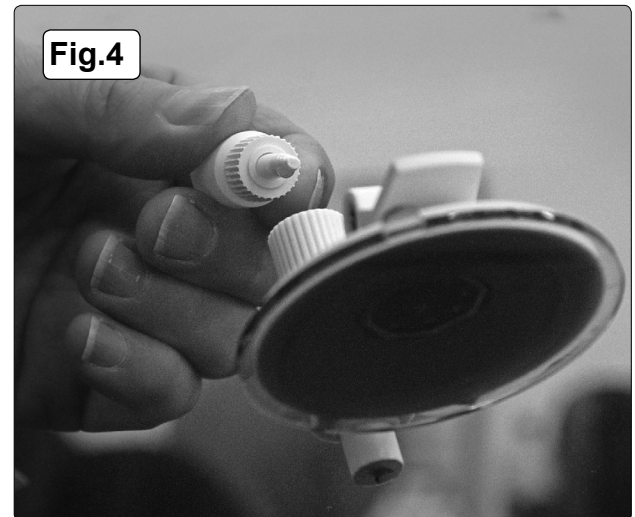
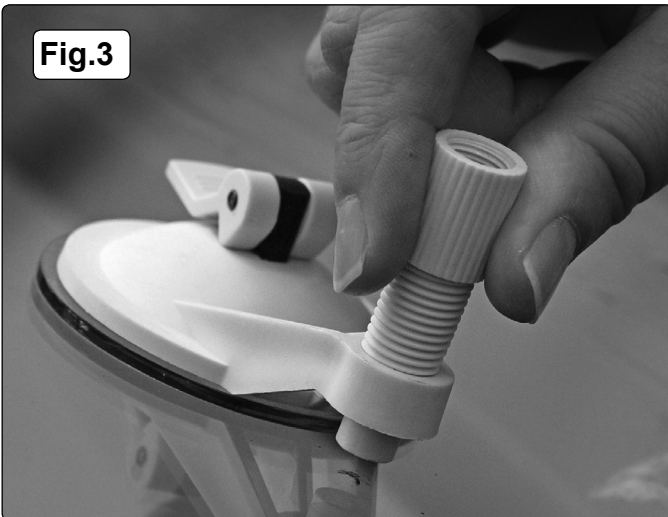
Model No: WK01
 Maximum Chip Diameter: 25mm
 Maximum Crack Length: 15mm



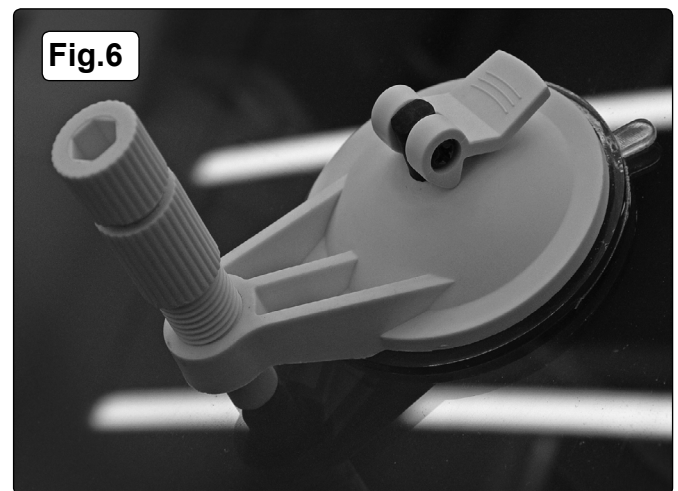
4. OPERATION



- 4.1. The windscreen and repair area should be under direct sunlight until the repair is completed.
- 4.2. Remove any fragments of glass by scraping with the razor blade and clean the glass with dry paper. (See fig.1).
- 4.3. Set the suction cup support set on the windscreen. Make sure the injection centre is directly over the damaged area. (See fig.2).



- 4.4. Screw the resin injection tube into the suction base and onto the damaged area of the windscreen. (See fig.3).
- 4.5. The injection tube must touch the point of damage on the screen. Ensure the rubber tip of the resin injection tube fully seals against the surface of the point of damage. (See fig.4).
- 4.6. Cut off the tip of the resin bottle. Squeeze a few drops of resin into the injection tube. (The amount of resin depends on the extent of the damage). (See fig.4).



- 4.7. Put the pressure drive into the injection tube. Wind in the drive and pressure the resin into the chip area. (See fig.5).
- 4.8. Allow approximately 4 to 6 minutes for the repair resin to be absorbed into the damaged area. (See fig.6).



Fig.7

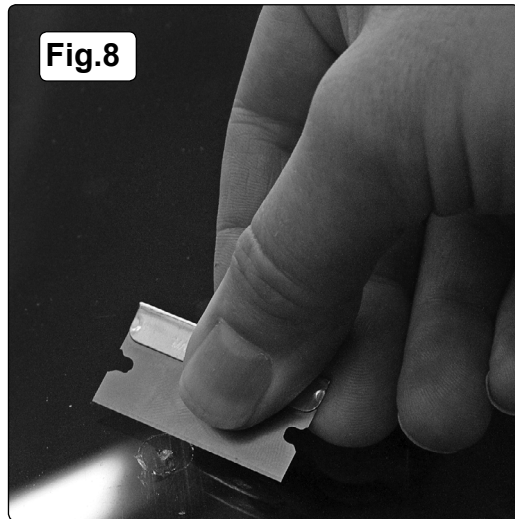


Fig.8

4.9. Unscrew and remove the injection drive to release the air inside the tube. (See fig.7).

4.10. Repeat instructions from 4.1 to 4.8 a couple of times to make sure the resin fully injects into the chip area. Clean the injection tube and pressure drive of any glue residue.

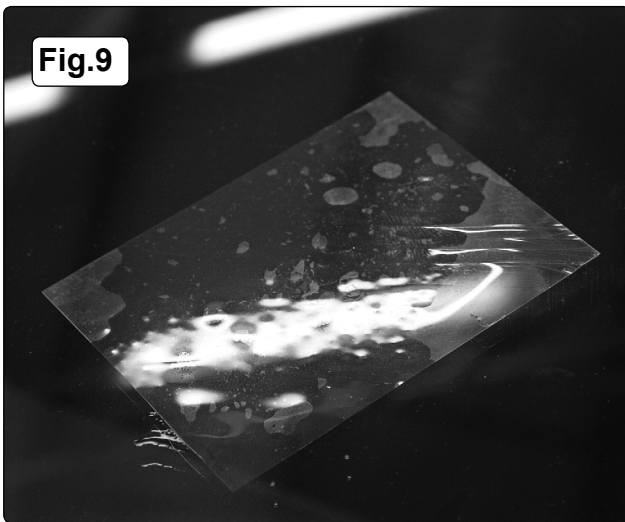


Fig.9

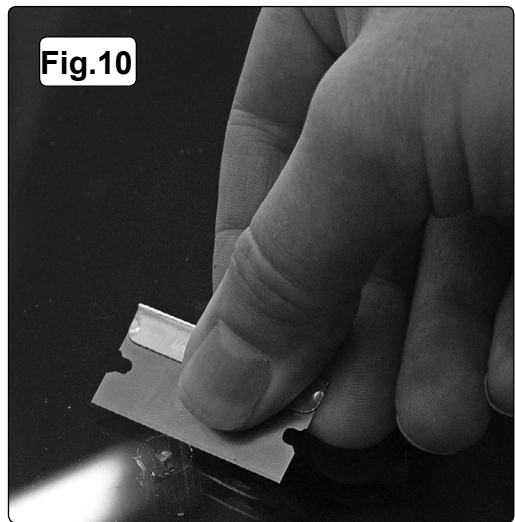


Fig.10

4.11. Remove the suction support set and clean away the excess resin. (See fig.8).

4.12. If the repair is still visible drop a small amount of repair resin on the damaged area.

4.13. Lay a curing strip over the top of it. Make sure there is no air left under the curing strip. (See fig.9).

4.14. Leave the vehicle in direct sunlight or use UV light for 5-10 minutes to dry. **DO NOT** remove the curing strip until the resin is dry.

4.15. Use the razor blade to scrape away the excess resin. (See fig.10).

4.16. If left to dry in overcast conditions the resin can take up to one hour to cure.

Parts support is available for this product. To obtain a parts listing and/or diagram, please log on to : www.sealey.co.uk, email: sales@sealey.co.uk or phone: 01284 757500



Environmental Protection.

Recycle unwanted materials instead of disposing of them as waste. All tools, accessories and packaging should be sorted, taken to a recycle centre and disposed of in a manner which is compatible with the environment.

NOTE: It is our policy to continually improve products and as such we reserve the right to alter data, specifications and component parts without prior notice.

IMPORTANT: No liability is accepted for incorrect use of this product.

WARRANTY: Guarantee is 12 months from purchase date, proof of which will be required for any claim.

INFORMATION: For a copy of our latest catalogue and promotions call us on 01284 757525 and leave your full name and address, including postcode.



Sole UK Distributor, Sealey Group,
Kempson Way, Suffolk Business Park,
Bury St. Edmunds, Suffolk,
IP32 7AR

01284 757500

www.sealey.co.uk

01284 703534

sales@sealey.co.uk