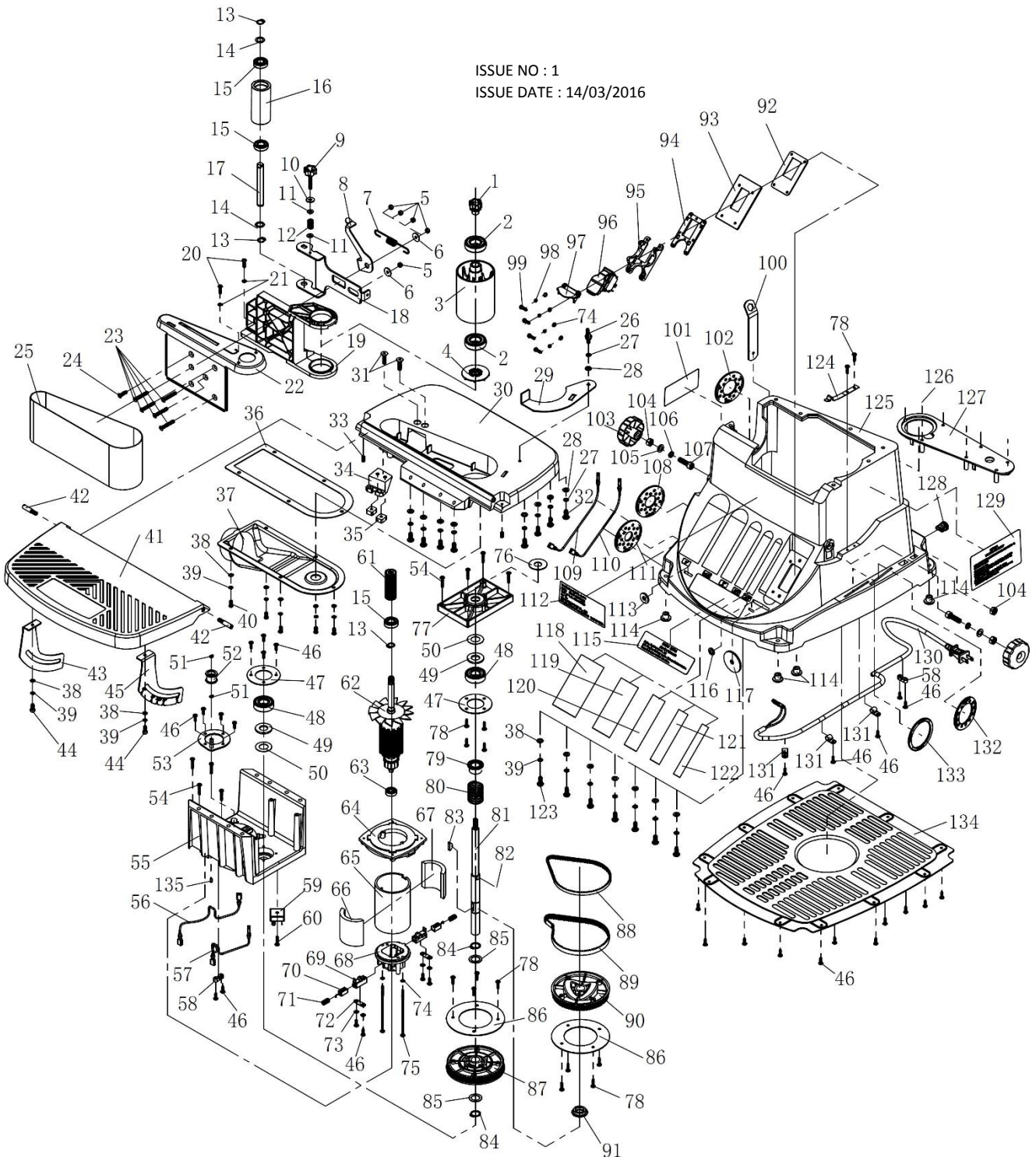


ISSUE NO : 1
 ISSUE DATE : 14/03/2016





PARTS FOR :
OSCILLATING BELT/SPINDLE SANDER
MODELS: SM1300

2 OF 2

ITEM	PART NO	DESCRIPTION	ITEM	PART NO	DESCRIPTION
1	SM1300.01	ADJUSTMENT KNOB	73	SM1300.73	SPRING WASHER
2	SM1300.02	BEARING 604	74	SM1300.74	FLAT WASHER
3	SM1300.03	DRIVE PULLEY (LARGE)	75	SM1300.75	TAPPING SCREW (ST4.2x110)
4	SM1300.04	DRIVE PULLEY CONNECTOR	76	SM1300.76	RUBBER ANTI-DUST WASHER
5	SM1300.05	HEX NUT (M5)	77	SM1300.77	COVER FOR BEARING
6	SM1300.06	SPRING WASHER	78	SM1300.78	TAPPING SCREW (ST4.2x16)
7	SM1300.07	SPRING	79	SM1300.79	SLEEVE FOR BEARING
8	SM1300.08	TIGHTING ADJUST BRACKET	80	SM1300.80	PRESSING SPRING
9	SM1300.09	TIGHTING ADJUST KNOB	81	SM1300.81	OUTPUT SHAFT
10	SM1300.10	RUBBER WASHER	82	SM1300.82	SHAFT KEY
11	SM1300.11	WASHER	83	SM1300.83	KEY (5x19)
12	SM1300.12	SPRING	84	SM1300.84	RING FOR OUTPUT SHAFT
13	SM1300.13	SPRING WASHER	85	SM1300.85	WASHER FOR OUTPUT SHAFT
14	SM1300.14	CUSHION FOR SHAFT	86	SM1300.86	COVER FOR DRIVE PULLEY
15	SM1300.15	BEARING 601	87	SM1300.87	DRIVE PULLEY
16	SM1300.16	DRIVE PULLEY (SMALL)	88	SM1300.88	DRIVE BELT
17	SM1300.17	SHAFT FOR DRIVE PULLEY (SMALL)	89	SM1300.89	DRIVE BELT
18	SM1300.18	BRACKET FOR DRIVE PULLEY (SMALL)	90	SM1300.90	DRIVEN PULLEY
19	SM1300.19	BRACKET FOR DRIVE PULLEY (LARGE)	91	SM1300.91	SLEEVE FOR BEARING
20	SM1300.20	CROSS HEAD SCREW (M4x16)	92	SM1300.92	SWITCH PLATE
21	SM1300.21	WASHER	93	SM1300.93	SWITCH PLATE SEAL
22	SM1300.22	DRIVE PULLEY COVER	94	SM1300.94	POSITION RING FOR SWITCH (UPPER)
23	SM1300.23	SOCKET HEAD CAP SCREW (M5x36)	95	SM1300.95	POSITION RING FOR SWITCH (LOWER)
24	SM1300.24	SOCKET HEAD CAP SCREW (M5x20)	96	SM1300.96	SWITCH ASSEMBLY
25	SM1300.25	SANDING BELT 4"x24"	97	SM1300.97	SWITCH COVER
26	SM1300.26	BUTTERFLY SCREW	98	SM1300.98	SPRING WASHER
27	SM1300.27	SPRING WASHER	99	SM1300.99	CROSS HEAD SCREW (M4x19)
28	SM1300.28	FLAT WASHER	100	SM1300.100	WRENCH
29	SM1300.29	GUIDE BRACKET	101	SM1300.101	WARNING LABEL
30	SM1300.30	MAIN TABLE	102	SM1300.102	PLASTIC WASHER
31	SM1300.31	SOCKET HEAD CAP SCREW (M6x25)	103	SM1300.103	ADJUSTMENT KNOB
32	SM1300.32	CROSS HEAD SCREW (M6x16)	104	SM1300.104	HEX NUT (M8)
33	SM1300.33	SOCKET HEAD CAP SCREW (M5x13)	105	SM1300.105	FLAT WASHER
34	SM1300.34	SLIDING SUPPORT	106	SM1300.106	SPRING WASHER
35	SM1300.35	SQUARE NUT (M6)	107	SM1300.107	SOCKET HEAD CAP SCREW (M8x28)
36	SM1300.36	RUBBER GASKET	108	SM1300.108	PLASTIC WASHER
37	SM1300.37	DUST EXTRACTION GUARD	109	SM1300.109	MOTOR WIRE (A)
38	SM1300.38	FLAT WASHER	110	SM1300.110	MOTOR WIRE (B)
39	SM1300.39	SPRING WASHER	111	SM1300.111	PLASTIC WASHER
40	SM1300.40	CROSS HEAD SCREW (M5x12)	112	SM1300.112	NAMEPLATE
41	SM1300.41	ALUMINIUM MOBILE TABLE	113	SM1300.113	GRINDING WHEEL COVER
42	SM1300.42	SWIVEL SCREW	114	SM1300.114	RUBBER FOOT
43	SM1300.43	RIGHT ANGLE SCALE PLATE	115	SM1300.115	FRONT LABEL
44	SM1300.44	SOCKET HEAD CAP SCREW (M5x12)	116	SM1300.116	COVER FOR GRINDING WHEEL
45	SM1300.45	LEFT ANGLE SCALE PLATE	117	SM1300.117	COVER FOR GRINDING WHEEL
46	SM1300.46	TAPPING SCREW (ST4.2x13)	118	SM1300.118	SANDING DRUM
47	SM1300.47	COVER FOR BEARING	119	SM1300.119	SANDING DRUM
48	SM1300.48	BEARING 6203	120	SM1300.120	SANDING DRUM
49	SM1300.49	FIBRE WASHER	121	SM1300.121	SANDING DRUM
50	SM1300.50	RUBBER WASHER	122	SM1300.122	SANDING DRUM
51	SM1300.51	SPRING WASHER	123	SM1300.123	CROSS HEAD SCREW (M6x16)
52	SM1300.52	WHEEL TIGHTENING ASSEMBLY	124	SM1300.124	SCALE PLATE
53	SM1300.53	POSITION ASSEMBLING	125	SM1300.125	PLASTIC BASE
54	SM1300.54	TAPPING SCREW (ST4.2x23)	127	SM1300.127	PLASTIC FACE PLATE
55	SM1300.55	BRACKET FOR WHEEL	128	SM1300.128	WIRE GRIP
56	SM1300.56	CONNECTING WIRE (A)	129	SM1300.129	WARNING LABEL
57	SM1300.57	CONNECTING WIRE (B)	130	SM1300.130	POWER CABLE
58	SM1300.58	CABLE GRIP	131	SM1300.131	POWER CABLE CLAMP
59	SM1300.59	RECTIFIER (KBPC1504)	132	SM1300.132	PLASTIC WASHER
60	SM1300.60	TAPPING SCREW (ST4.2x1.9)	133	SM1300.133	PLASTIC WASHER
61	SM1300.61	ROTOR GUIDE	134	SM1300.134	PLASTIC BOTTOM PLATE
62	SM1300.62	ROTOR ASSEMBLY	135	SM1300.135	RUBBER KEY
63	SM1300.63	BEARING 608			
64	SM1300.64	CONNECTING PLATE			
65	SM1300.65	CYLINDER			
66	SM1300.66	MAGNETIC COVER			
67	SM1300.67	MAGNETIC COVER			
68	SM1300.68	REAR COVER FOR CYLINDER			
69	SM1300.69	BRUSH HOLDER			
70	SM1300.70	CARBON BRUSH			
71	SM1300.71	CARBON BRUSH SPRING			
72	SM1300.72	WIRE GRIP			

PART NO	DESCRIPTION
SM1300B13	SANDING SLEEVE 13 x 90mm 80GRIT
SM1300B19	SANDING SLEEVE 19 x 90mm 80 GRIT
SM1300B25	SANDING SLEEVE 25 x 90mm 80 GRIT
SM1300B38	SANDING SLEEVE 38 x 90mm 80 GRIT
SM1300B50	SANDING SLEEVE 50 x 90mm 80 GRIT
SM1300B610	SANDING BELT 610 X 102mm 80GRIT



Sole UK Distributor,
Sealey Group, Kempson Way,
Suffolk Business Park,
Bury St Edmunds, Suffolk, IP32 7AR



01284 757500



01284 703534



www.sealey.co.uk



sales@sealey.co.uk